

8 7 6 5 4 3 2 1

D

D

C

C

B

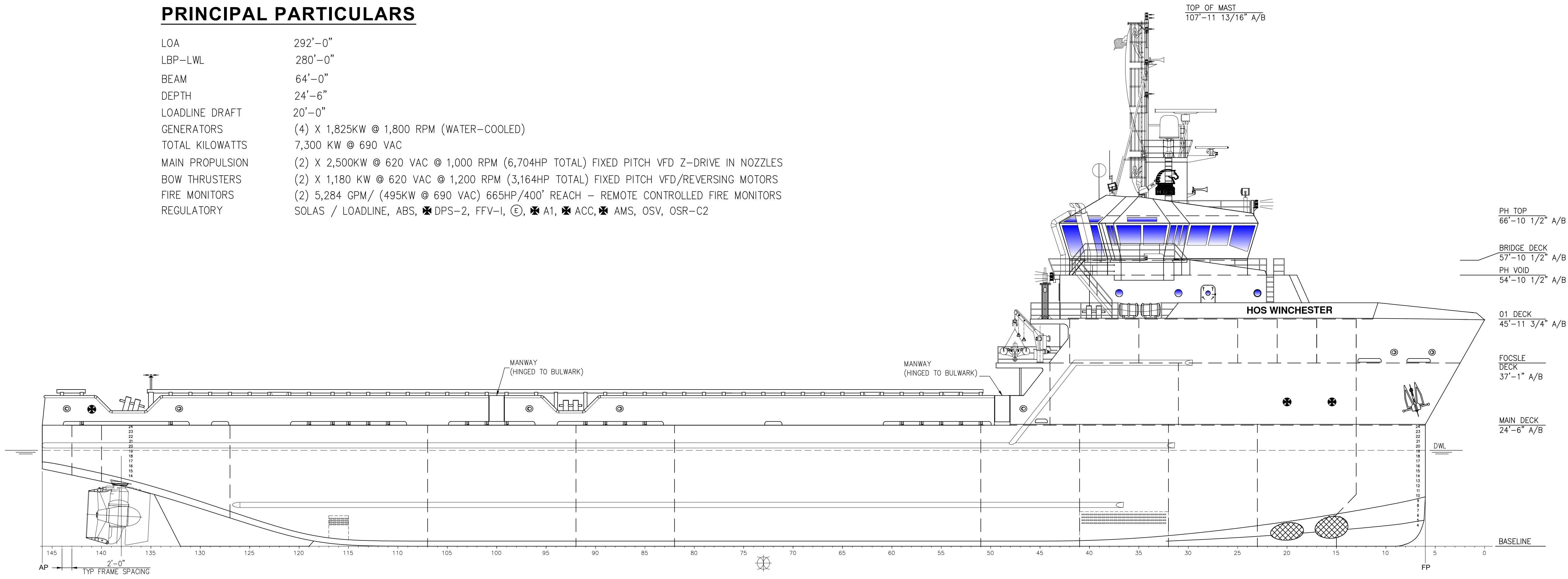
B

A

A

PRINCIPAL PARTICULARS

LOA	292'-0"
LBP-LWL	280'-0"
BEAM	64'-0"
DEPTH	24'-6"
LOADLINE DRAFT	20'-0"
GENERATORS	(4) X 1,825KW @ 1,800 RPM (WATER-COOLED)
TOTAL KILOWATTS	7,300 KW @ 690 VAC
MAIN PROPULSION	(2) X 2,500KW @ 620 VAC @ 1,000 RPM (6,704HP TOTAL) FIXED PITCH VFD Z-DRIVE IN NOZZLES
BOW THRUSTERS	(2) X 1,180 KW @ 620 VAC @ 1,200 RPM (3,164HP TOTAL) FIXED PITCH VFD/REVERSING MOTORS
FIRE MONITORS	(2) 5,284 GPM / (495KW @ 690 VAC) 665HP/400' REACH - REMOTE CONTROLLED FIRE MONITORS
REGULATORY	SOLAS / LOADLINE, ABS, ✕ DPS-2, FFV-I, ©, ✕ A1, ✕ ACC, ✕ AMS, OSV, OSR-C2



OUTBOARD PROFILE

HOSMAX 300 / HOS WINCHESTER

THIS DRAWING, DESIGN CONCEPT AND SPECIFICATIONS ARE THE PROPERTY OF HORNBECK OFFSHORE SERVICES AND ARE FURNISHED ON A CONFIDENTIAL BASIS WITH AN EXPRESSED UNDERSTANDING THAT THEY WILL NOT BE COPIED IN ANY MANNER USED FOR MANUFACTURE, SOLD, TRANSFERRED, NOR USED TO THE DETRIMENT OF SAID FIRM WITHOUT WRITTEN PERMISSION.

DRAWN BY: S. MAUL		292'-0" X 64'-0" X 24'-6"	
CHECKED BY: M. STANSBURY		OUTBOARD PROFILE & GENERAL ARRANGEMENT	
APPROVED BY: J. GUIDRY		TASK No. 7868	SCALE: 3/32"=1'-0"
		DRAWING No. 1,001	DATE: 05/21/18
		HULL No. 987	SY: ESG
		SHEET 1 OF 4	

LAST SAVE/PLT: 6/8/2023 11:22 AM
ENG: JSULLIVA
SHEET: ANSI D 22X34

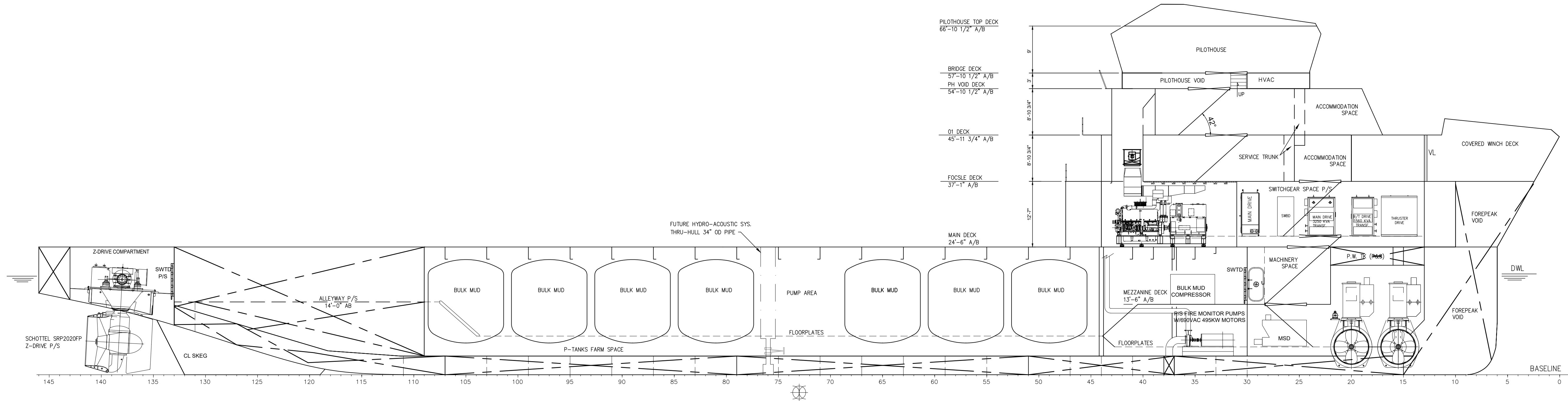
8 7 6 5 4 3 2 1

D

D

C

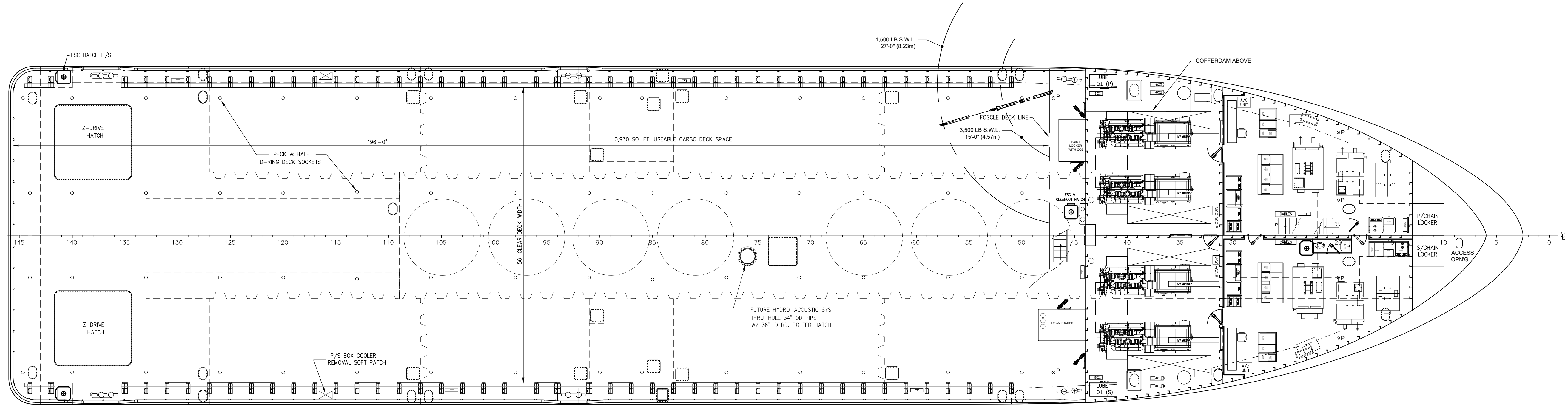
C



INBOARD PROFILE

B

B



MAIN DECK

A

A

THIS DRAWING, DESIGN CONCEPT AND SPECIFICATIONS ARE THE PROPERTY OF HORNBECK OFFSHORE SERVICES AND ARE FURNISHED ON A CONFIDENTIAL BASIS WITH AN EXPRESSED UNDERSTANDING THAT THEY WILL NOT BE COPIED IN ANY MANNER USED FOR MANUFACTURE, SALE, TRANSFER, NOR USED TO THE DETRIMENT OF SAID FIRM WITHOUT WRITTEN PERMISSION. HOS

HORNBECK OFFSHORE SERVICES

OUTBOARD PROFILE & GENERAL ARRANGEMENT		SIZE D
TASK No. 7868	DRAWING No. 1,001	REV. 3
HULL No. 987	SY: ESG	DATE: 05/21/18
		SHEET 2 OF 4

D

D

C

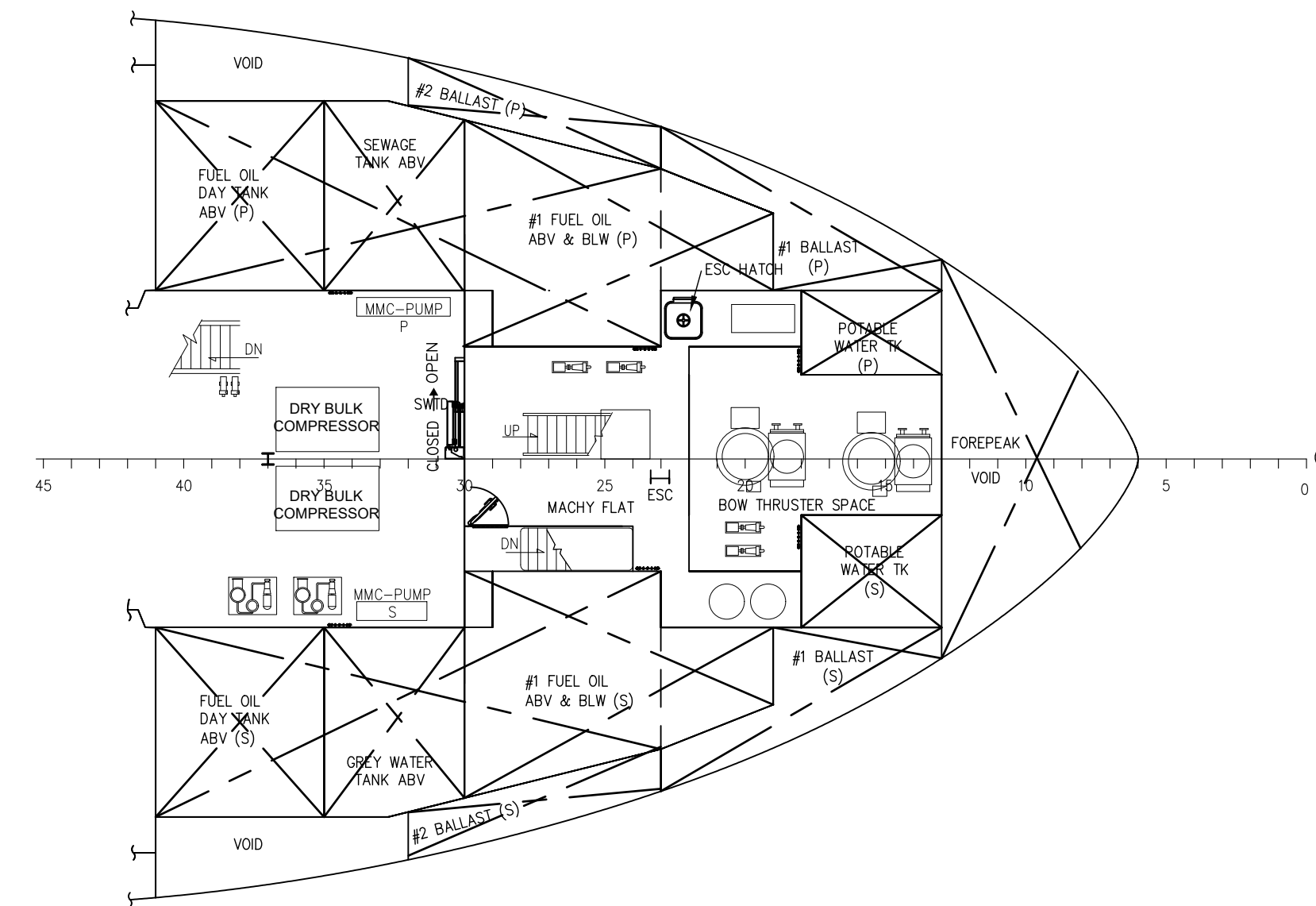
C

B

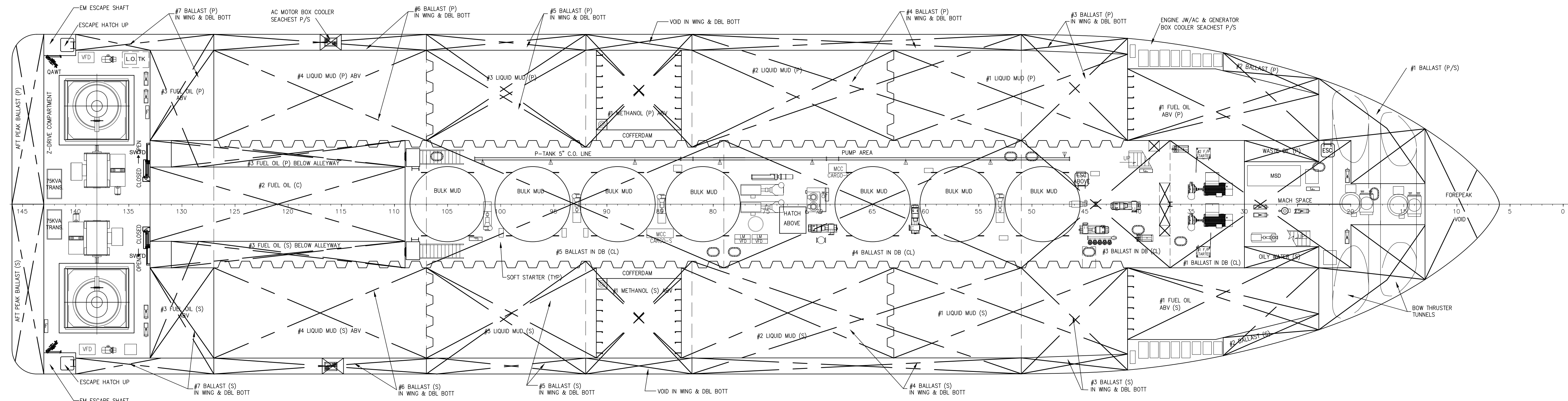
B

A

A



MEZZANINE FLAT



HOLD PLAN

<p>HORNBECK OFFSHORE SERVICES</p>	THIS DRAWING, DESIGN CONCEPT AND SPECIFICATIONS ARE THE PROPERTY OF HORNBECK OFFSHORE SERVICES AND ARE FURNISHED ON A CONFIDENTIAL BASIS WITH AN EXPRESSED UNDERSTANDING THAT THEY WILL NOT BE COPIED IN ANY MANNER USED FOR MANUFACTURING, SOLD, TRANSFERRED, NOR USED TO THE DETRIMENT OF SAID FIRM WITHOUT WRITTEN PERMISSION.			OUTBOARD PROFILE & GENERAL ARRANGEMENT	SIZE D
	TASK No. 7868	DRAWING No. 1.001	SCALE: 3/32"=1'-0"	DATE: 05/21/18	REV. 3
	HULL No. 987	SY: ESG	SHEET 3 OF 4		

D

D

C

C

B

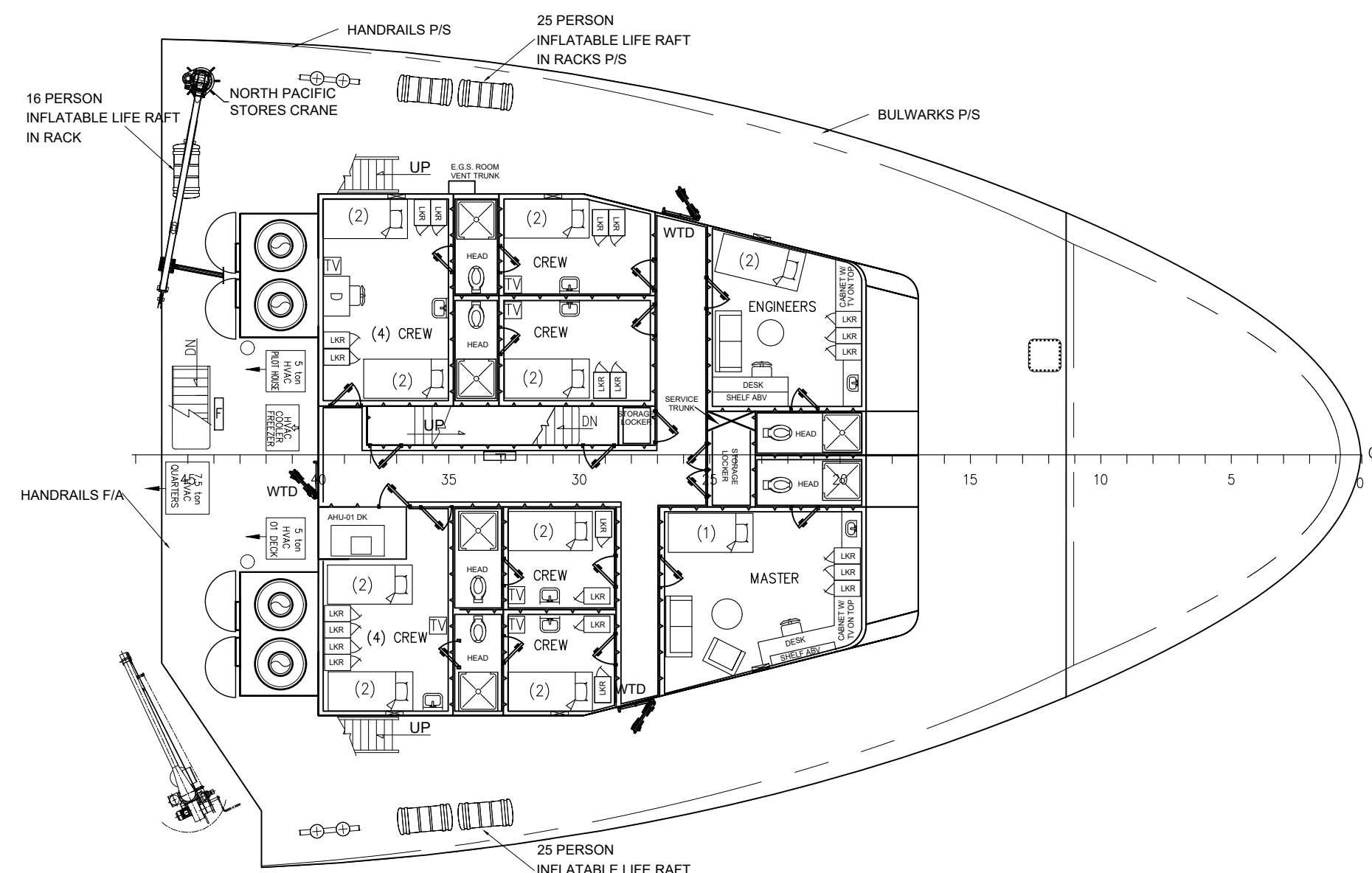
B

A

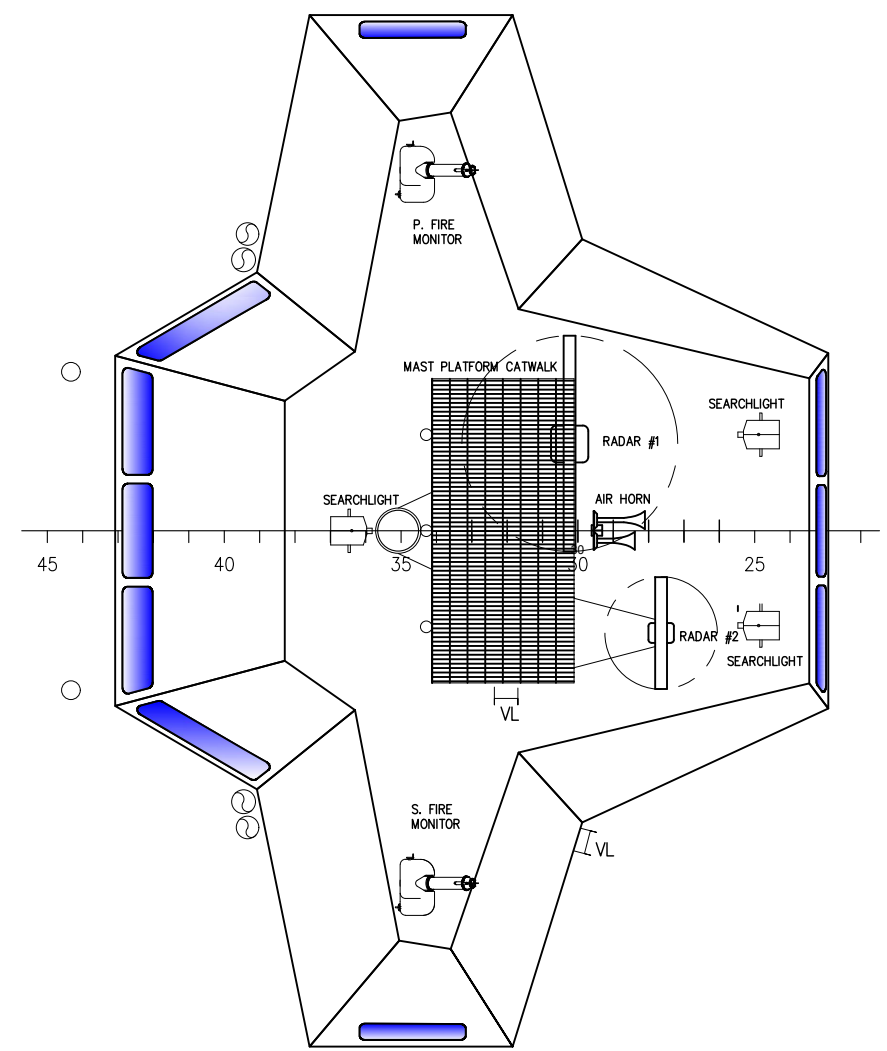
A

292' SUMMARY TABLE

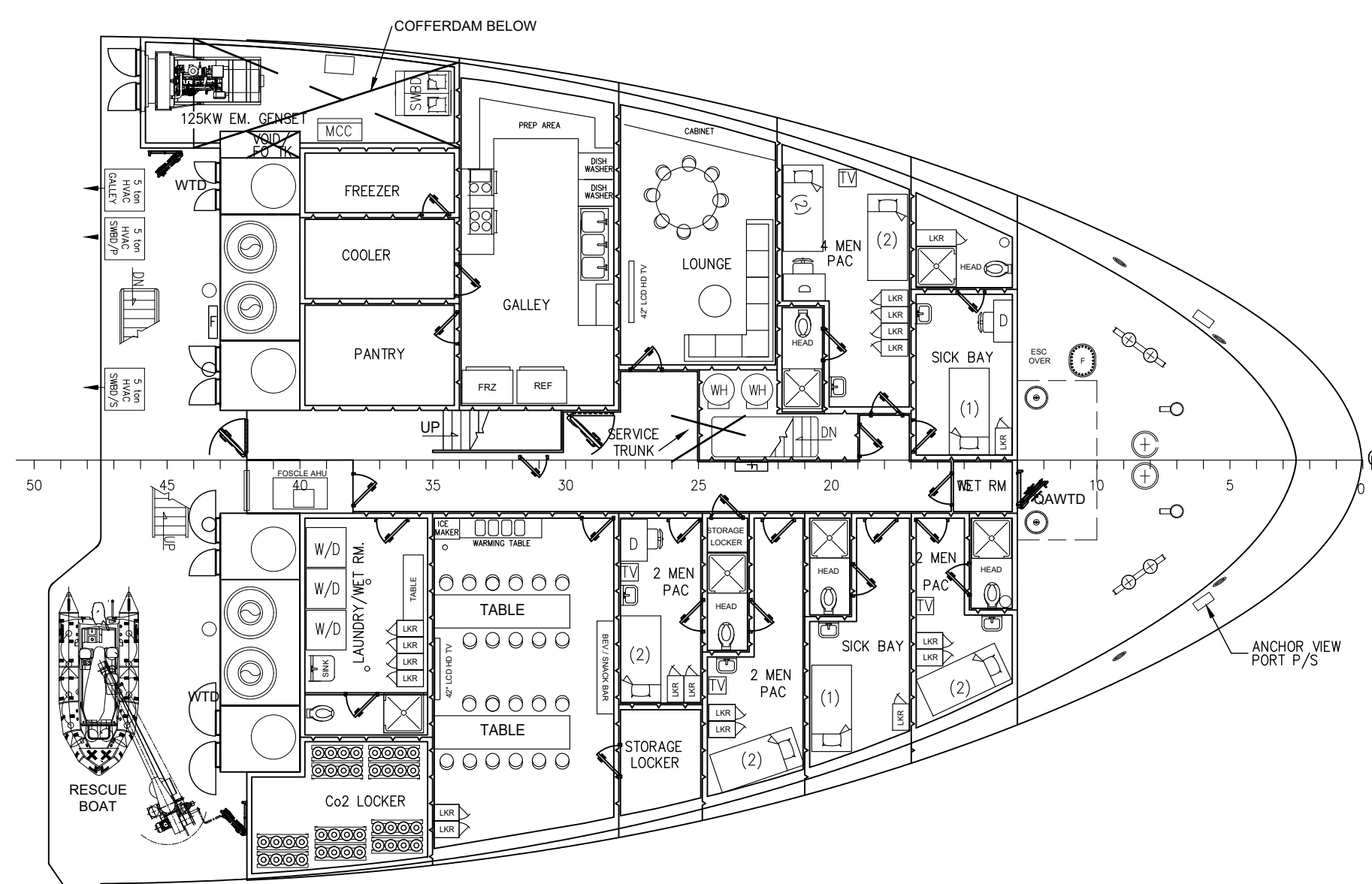
ACCOMMODATIONS	31 PERSONS
STATEROOMS	12
HEADS	12
LOUNGE	1
LAUNDRY AREA	1
GALLEY	1
MESS AREA	1
SICK BAY	2



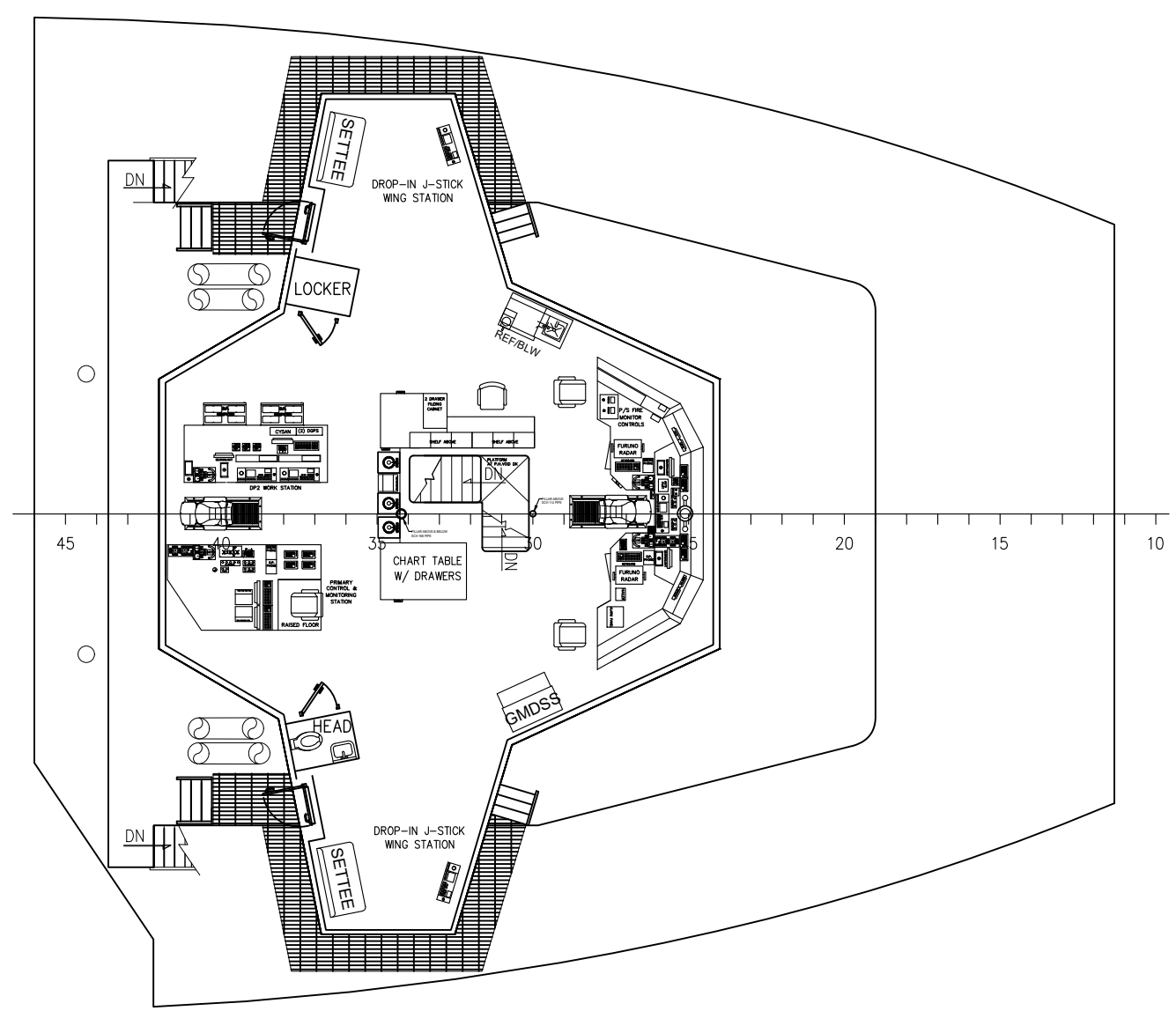
01 DECK
19 BERTHS



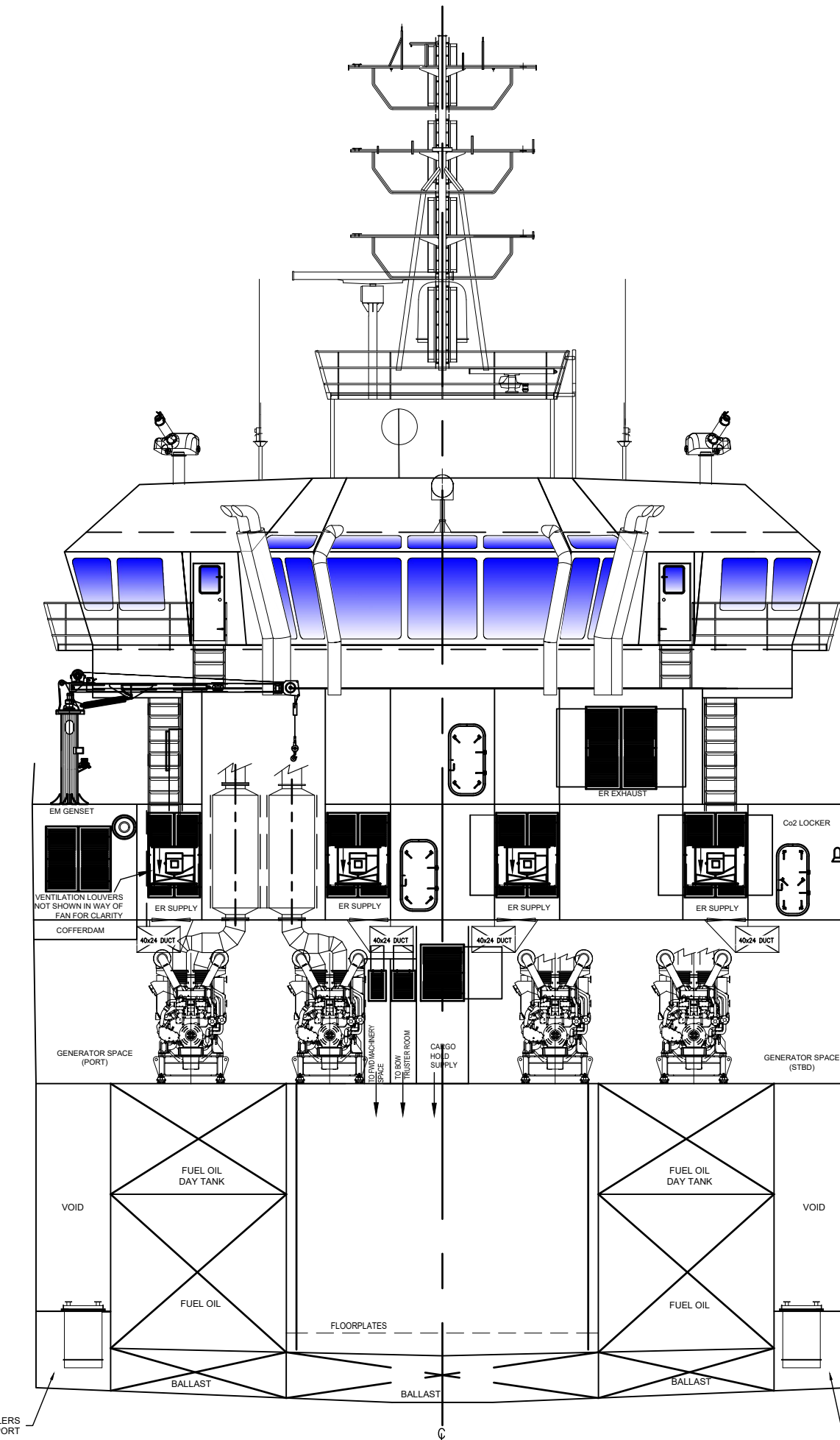
PH TOP DECK



FOCSLE DECK
10 BERTHS (PAC)
2 BERTH (SICK BAY)



BRIDGE DECK



SECTION ABOUT FR14
LKG WD

<p>HORNBECK OFFSHORE SERVICES</p>	<p>THIS DRAWING, DESIGN CONCEPT AND SPECIFICATIONS ARE THE PROPERTY OF HORNBECK OFFSHORE SERVICES AND ARE FURNISHED ON A CONFIDENTIAL BASIS WITH AN EXPRESSED UNDERSTANDING THAT THEY WILL NOT BE COPIED IN ANY MANNER USED FOR MANUFACTURE, SALE, TRANSFERRED, NOR USED TO THE DETRIMENT OF SAID FIRM WITHOUT WRITTEN PERMISSION. HOS</p>			<p>OUTBOARD PROFILE & GENERAL ARRANGEMENT</p>	<p>SIZE D</p>
	<p>TASK No. 7868</p>	<p>DRAWING No. 1.001</p>	<p>SCALE: 3/32"=1'-0"</p>	<p>REV. 3</p>	
	<p>HULL No. 987</p>	<p>SY: ESG</p>	<p>DATE: 05/21/18</p>	<p>SHEET 4 OF 4</p>	
	<p>REV. 3</p>				