

PRINCIPAL PARTICULARS

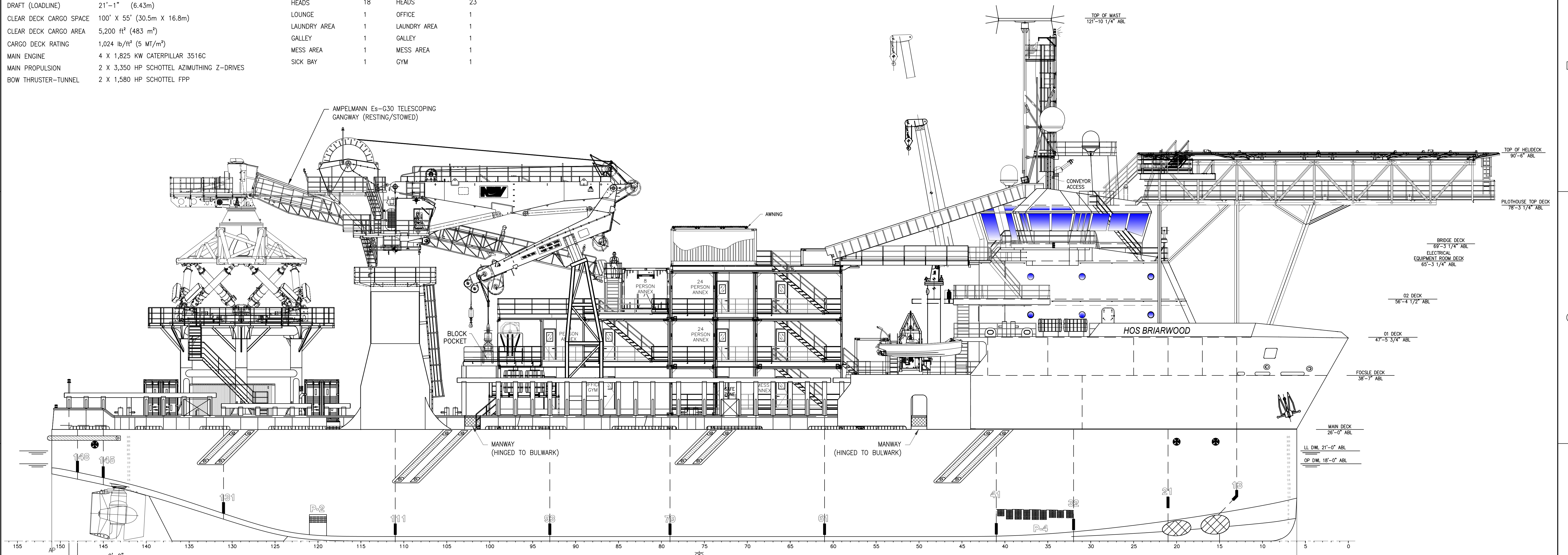
LOA	302'-0" (92m)
BREADTH	64'-0" (19.5m)
DEPTH	26'-0" (7.92m)
DRAFT (LOADLINE)	21'-1" (6.43m)
CLEAR DECK CARGO SPACE	100' X 55' (30.5m X 16.8m)
CLEAR DECK CARGO AREA	5,200 ft ² (483 m ²)
CARGO DECK RATING	1,024 lb/ft ² (5 MT/m ²)
MAIN ENGINE	4 X 1,825 KW CATERPILLAR 3516C
MAIN PROPULSION	2 X 3,350 HP SCHOTTEL AZIMUTHING Z-DRIVES
BOW THRUSTER-TUNNEL	2 X 1,580 HP SCHOTTEL FPP

ACCOMMODATION SUMMARY TABLE

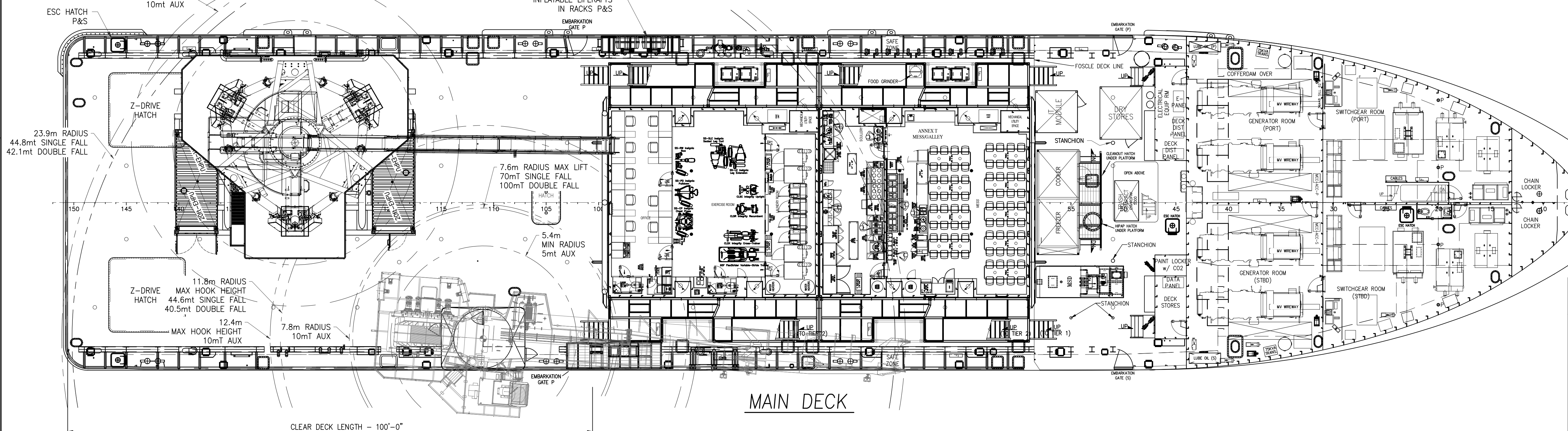
VESSEL:	ANNEX:
ACCOMMODATIONS 50	ACCOMMODATIONS 80
STATEROOMS 17	STATEROOMS 20
HEADS 18	HEADS 23
LOUNGE 1	OFFICE 1
LAUNDRY AREA 1	LAUNDRY AREA 1
GALLEY 1	GALLEY 1
MESS AREA 1	MESS AREA 1
SICK BAY 1	GYM 1

REGULATORY

OCEANS-SOLAS, USCG SUBCHAPTER I & L
 ABS LOADLINE, A1, AMS, ACCU, DPS-2, FFV-1, OSV, UWILD, OSR-C2, ENVIRO,
 GP, ACP, CRC, HELIX

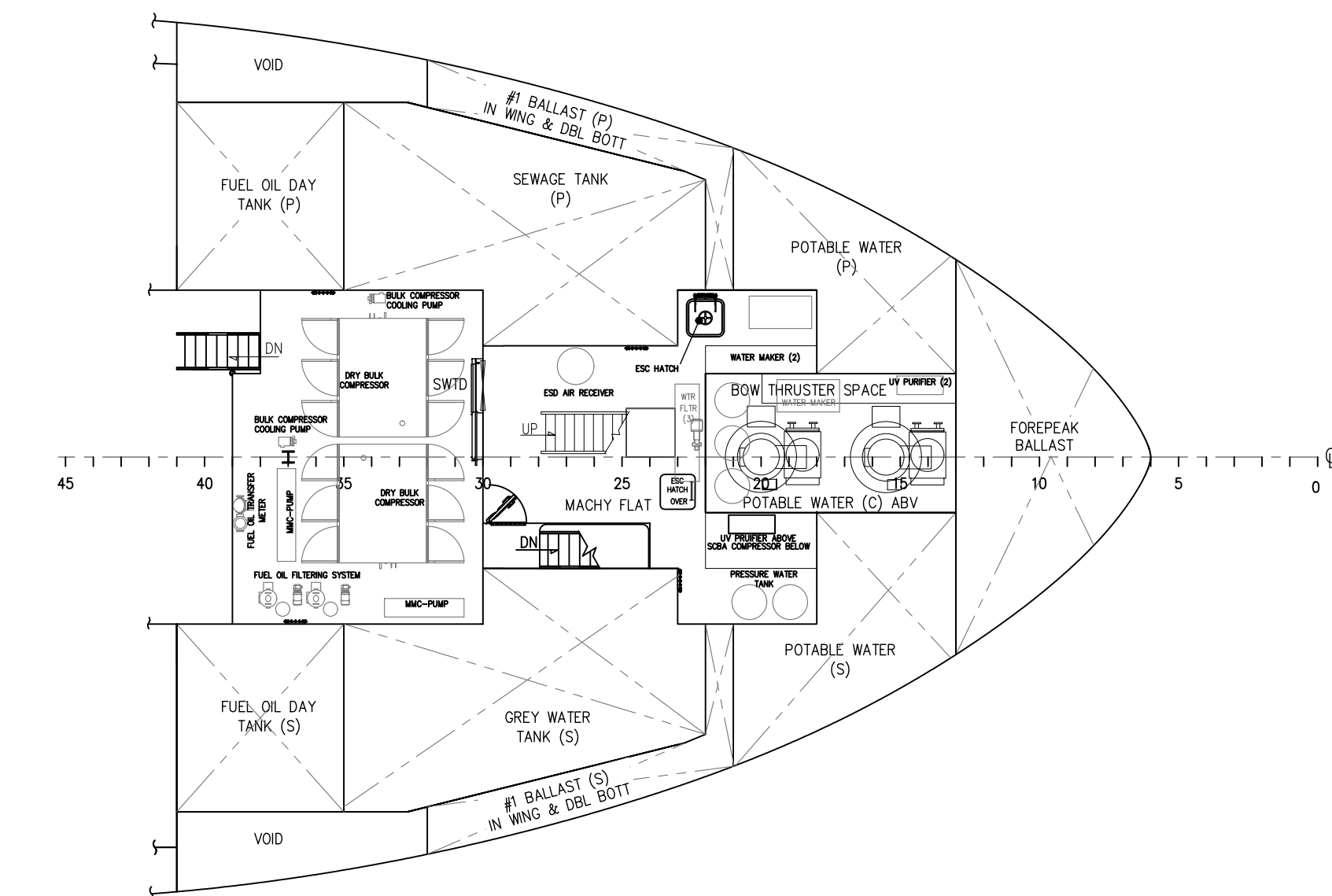


OUTBOARD PROFILE

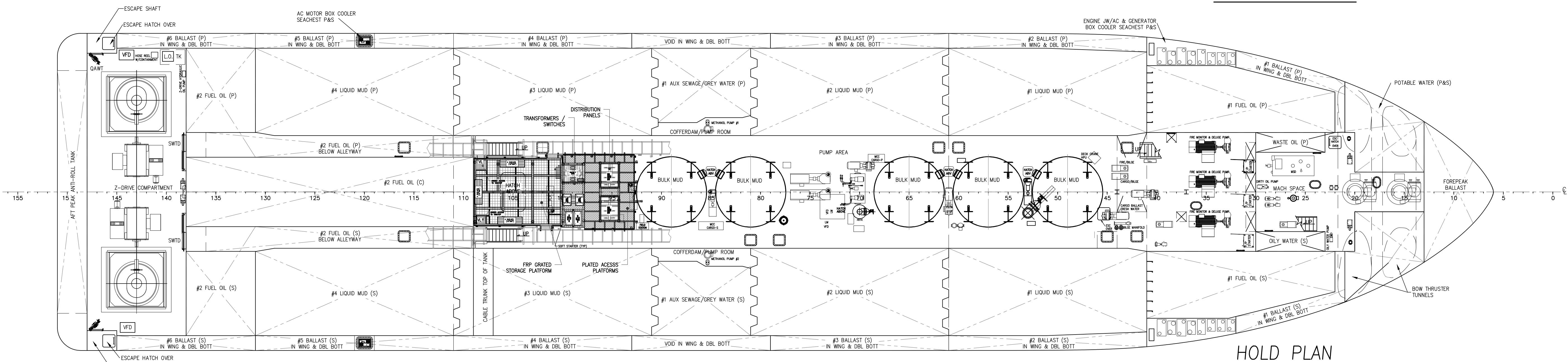


MAIN DECK

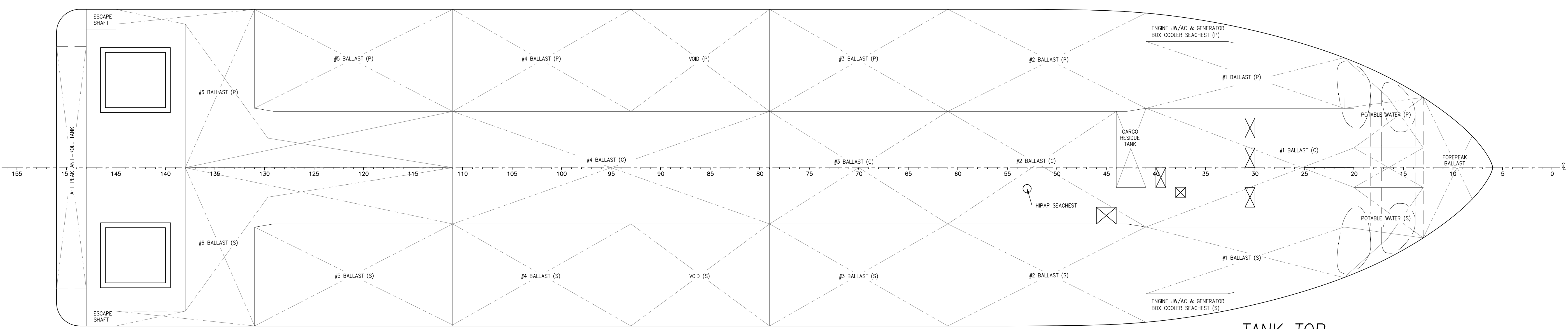
HOSMAX 310 EQH / HOS BRIARWOOD			
THIS DRAWING, DESIGN CONCEPT AND SPECIFICATIONS ARE THE PROPERTY OF HORNBECK OFFSHORE SERVICES AND ARE FURNISHED ON A CONFIDENTIAL BASIS WITH AN EXPRESSED UNDERSTANDING THAT THEY WILL NOT BE COPIED IN ANY MANNER USED FOR MANUFACTURE, SOLD, TRANSFERRED, NOR USED TO THE DETRIMENT OF SAID FIRM WITHOUT WRITTEN PERMISSION.			
DRAWN BY:		302'-0" X 64'-0" X 26'-0"	
S. MAUL		GENERAL ARRANGEMENT & OUTBOARD PROFILE	
CHECKED BY:		TASK No.	
J. GUIDRY		7738	
APPROVED BY:		DRAWING No.	
J. GUIDRY		1,001	
		SCALE: AS NOTED	
		DATE: 08/23/19	
		REV. 13	
		SY: ESG	
		SHEET 1 OF 4	



MEZZANINE FLAT



HOLD PLAN



TANK TOP

<p>HORNBECK OFFSHORE SERVICES</p>	<p>THIS DRAWING, DESIGN CONCEPT AND SPECIFICATIONS ARE THE PROPERTY OF HORNBECK OFFSHORE SERVICES AND ARE FURNISHED ON A CONFIDENTIAL BASIS WITH AN EXPRESSED UNDERSTANDING THAT THEY WILL NOT BE COPIED IN ANY MANNER USED FOR MANUFACTURE, REPRODUCTION, TRANSMISSION, NOR USED TO THE DETRIMENT OF SAID FIRM WITHOUT WRITTEN PERMISSION.</p>			<p>GENERAL ARRANGEMENT & OUTBOARD PROFILE</p>	<p>SIZE D</p>
	TASK No.	DRAWING No.	SCALE: AS NOTED		
	7738	1,001	DATE: 08/23/19		
	HULL No. 210	SY: ESG	SHEET 2 OF 4		

24

23

22

21

20

19

18

17

D

D

C

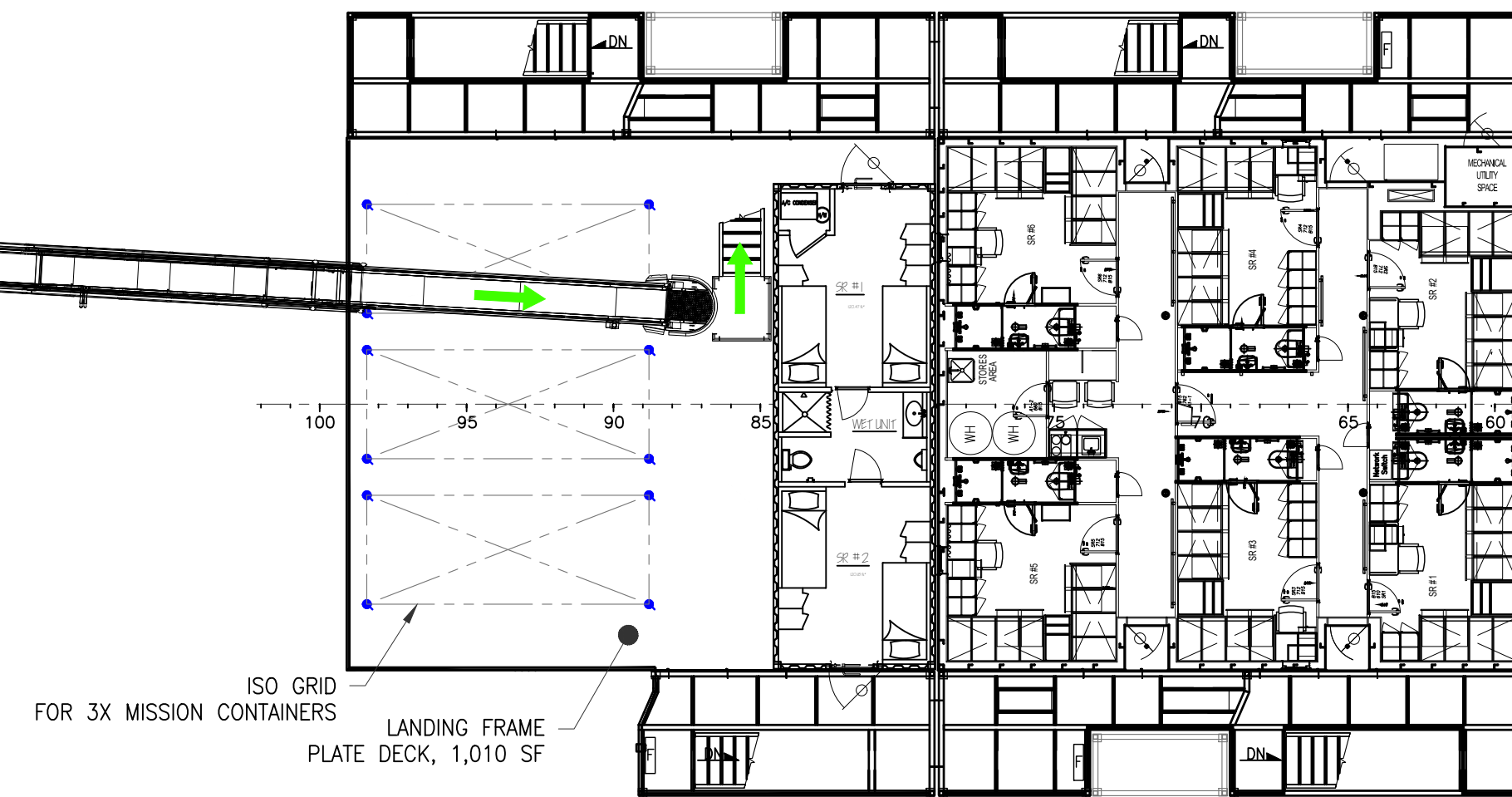
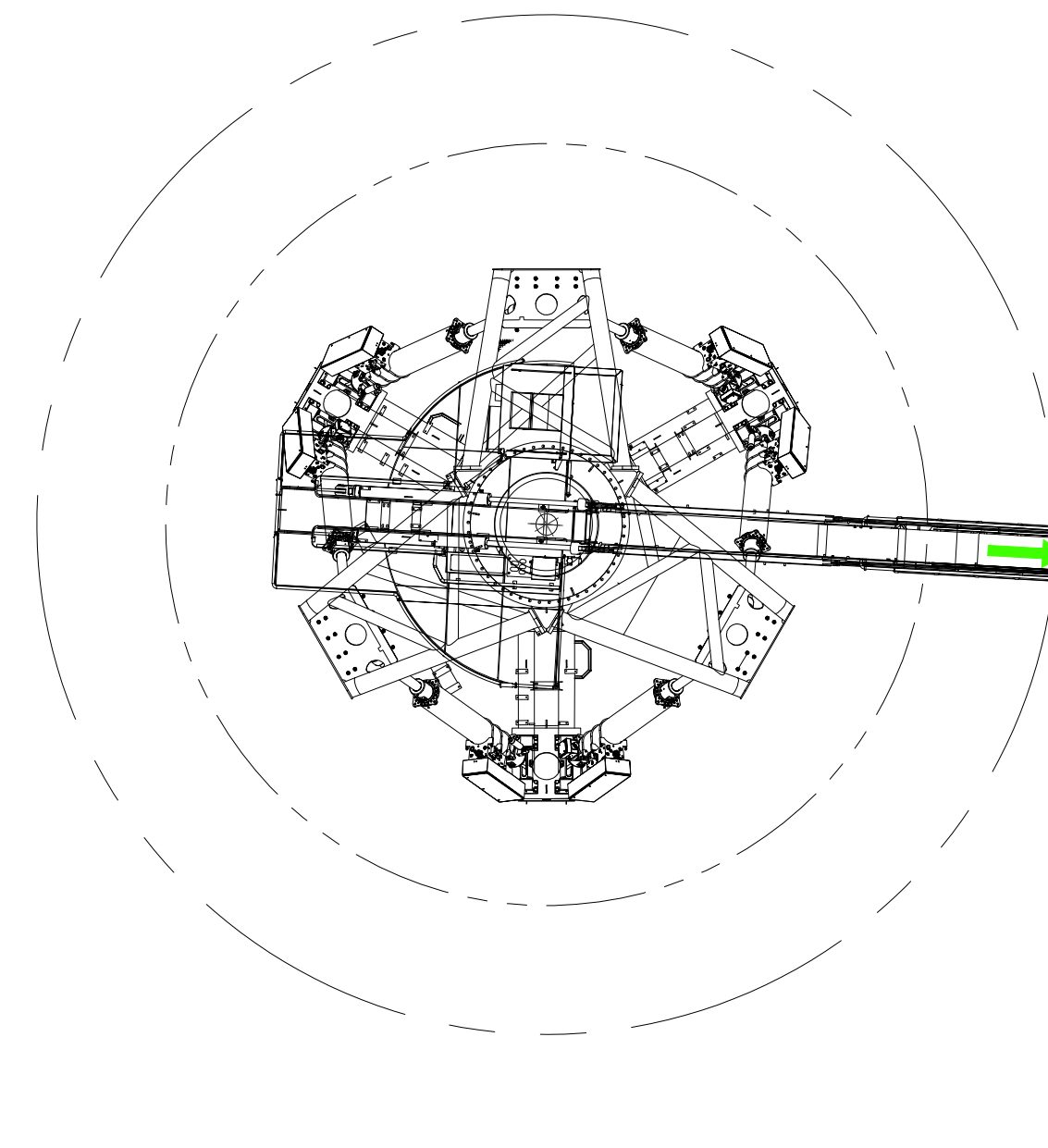
C

B

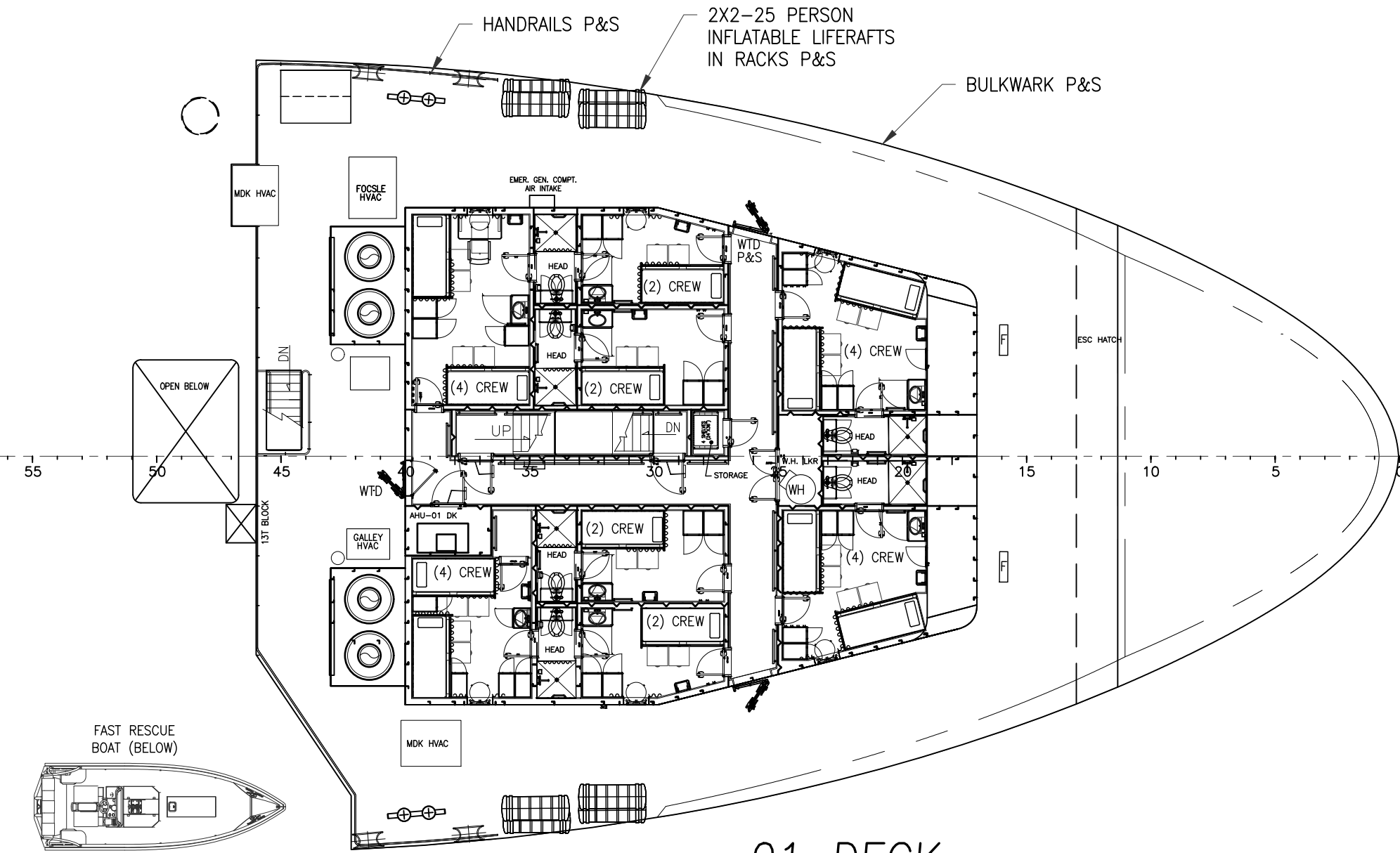
B

A

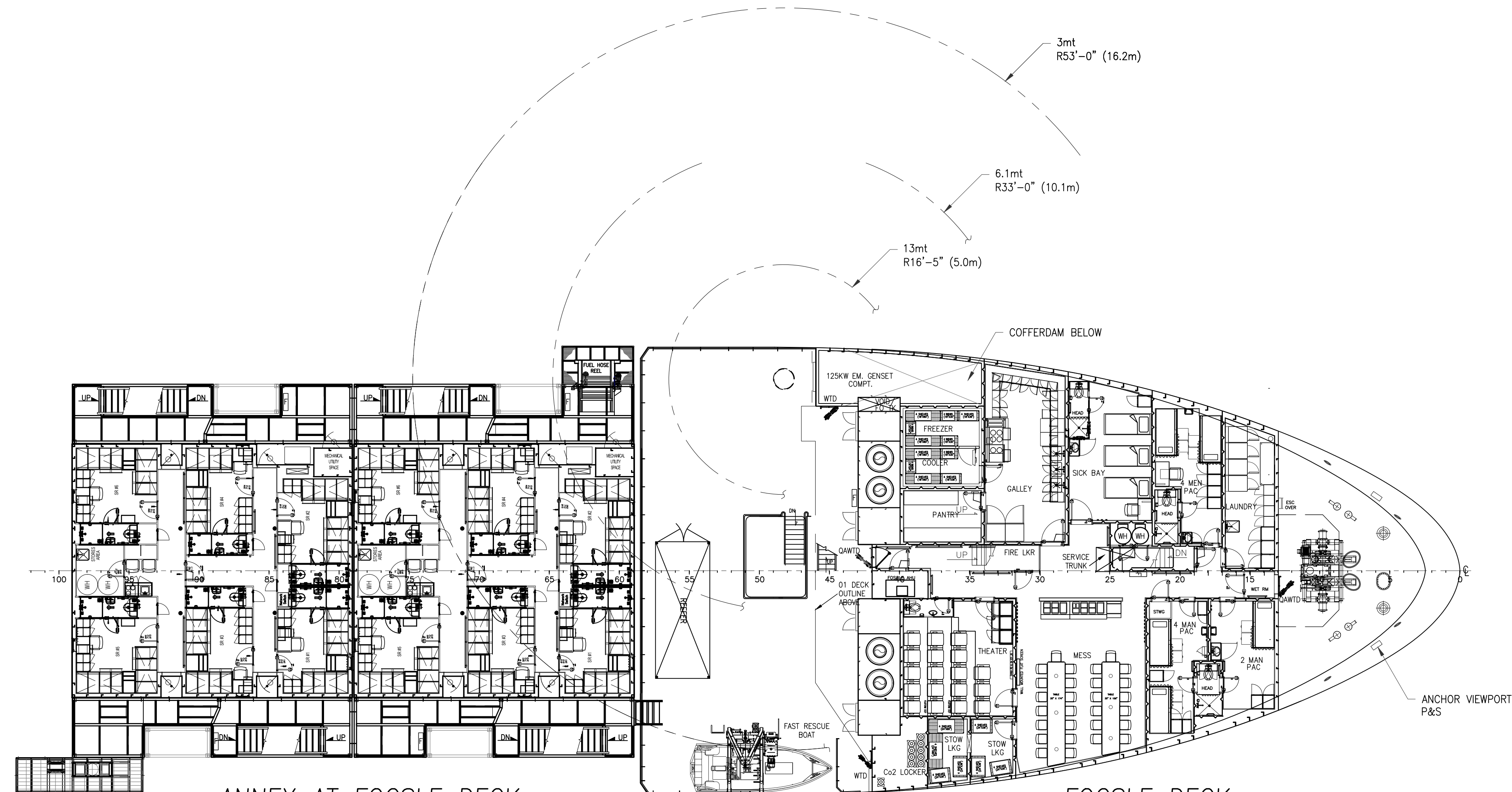
A



ANNEX AT 01 DECK
32 BERTH

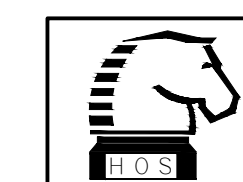


01 DECK
24 BERTH



ANNEX AT FOCBLE DECK
48 BERTH

FOCBLE DECK
10 BERTH (PAC)
3 BERTH (SICK BAY)



THIS DRAWING, DESIGN CONCEPT AND SPECIFICATIONS ARE THE PROPERTY OF HORNBECK OFFSHORE SERVICES AND ARE FURNISHED ON A CONFIDENTIAL BASIS WITH AN EXPRESSED UNDERSTANDING THAT THEY WILL NOT BE COPIED IN ANY MANNER USED FOR MANUFACTURE, SALE, TRANSFER, NOR USED TO THE DETRIMENT OF SAID FIRM WITHOUT WRITTEN PERMISSION.

HORNBECK OFFSHORE SERVICES

GENERAL ARRANGEMENT & OUTBOARD PROFILE

TASK No. 7738	DRAWING No. 1,001	SCALE: AS NOTED	REV. 13
HULL No. 210	SY: ESG	DATE: 08/23/19	SHEET 3 OF 4

SIZE
D

24

23

22

21

20

19

18

17

D

C

B

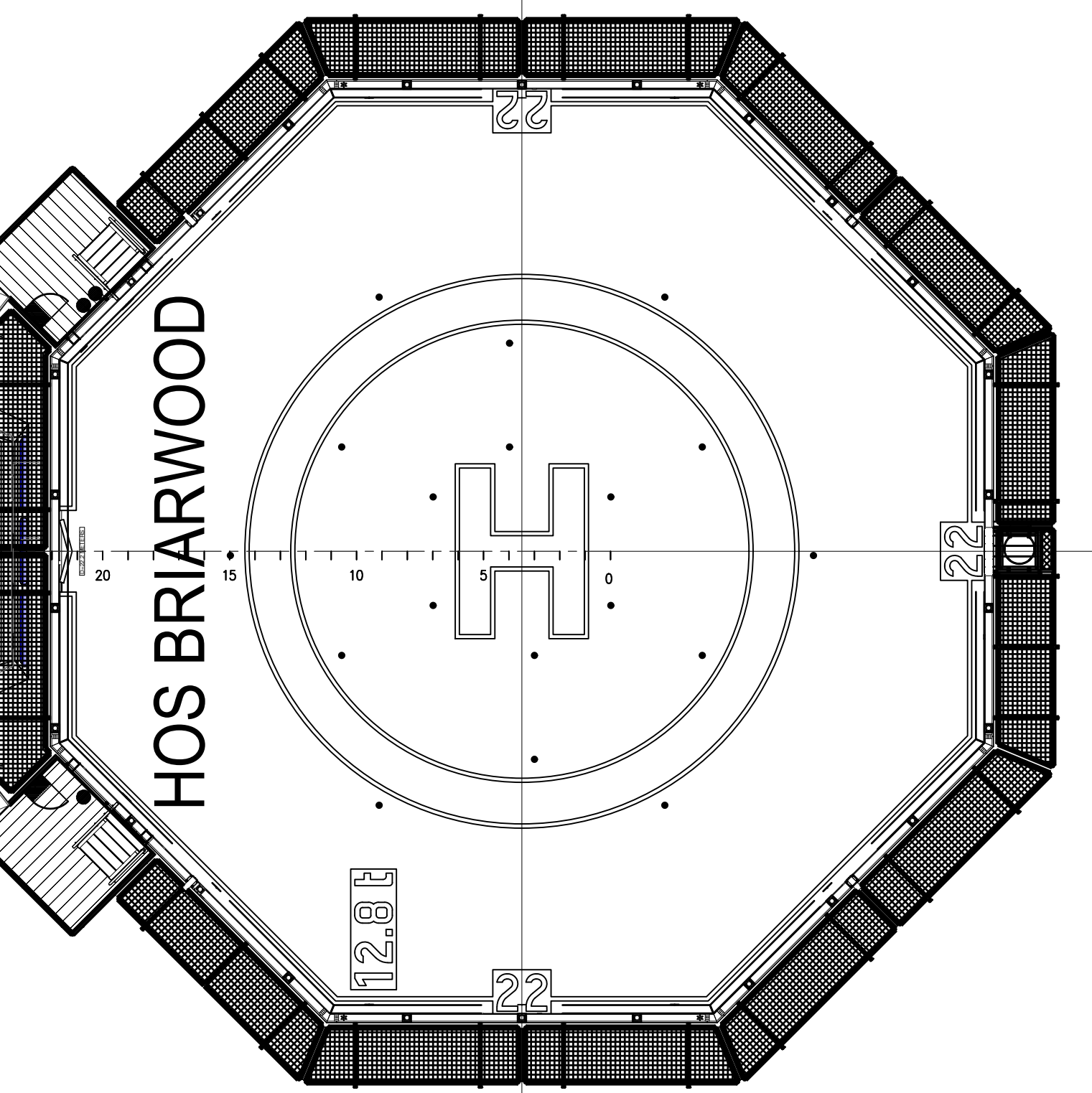
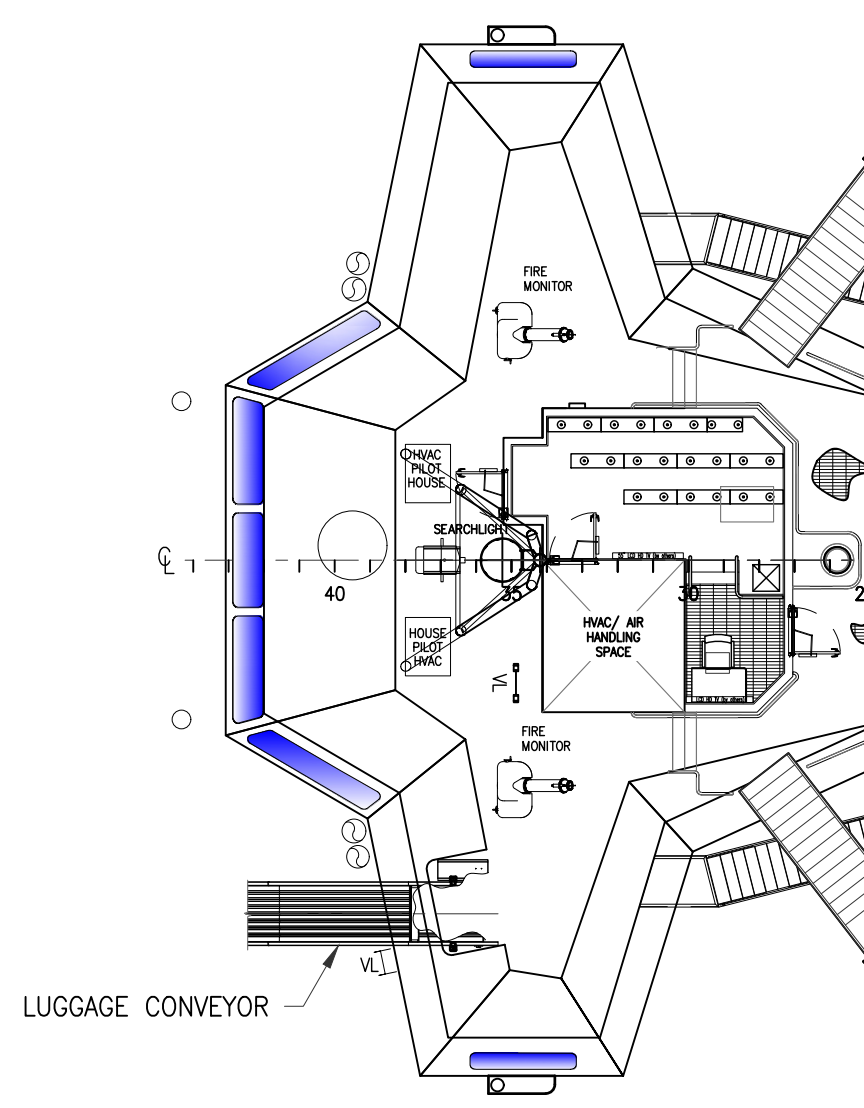
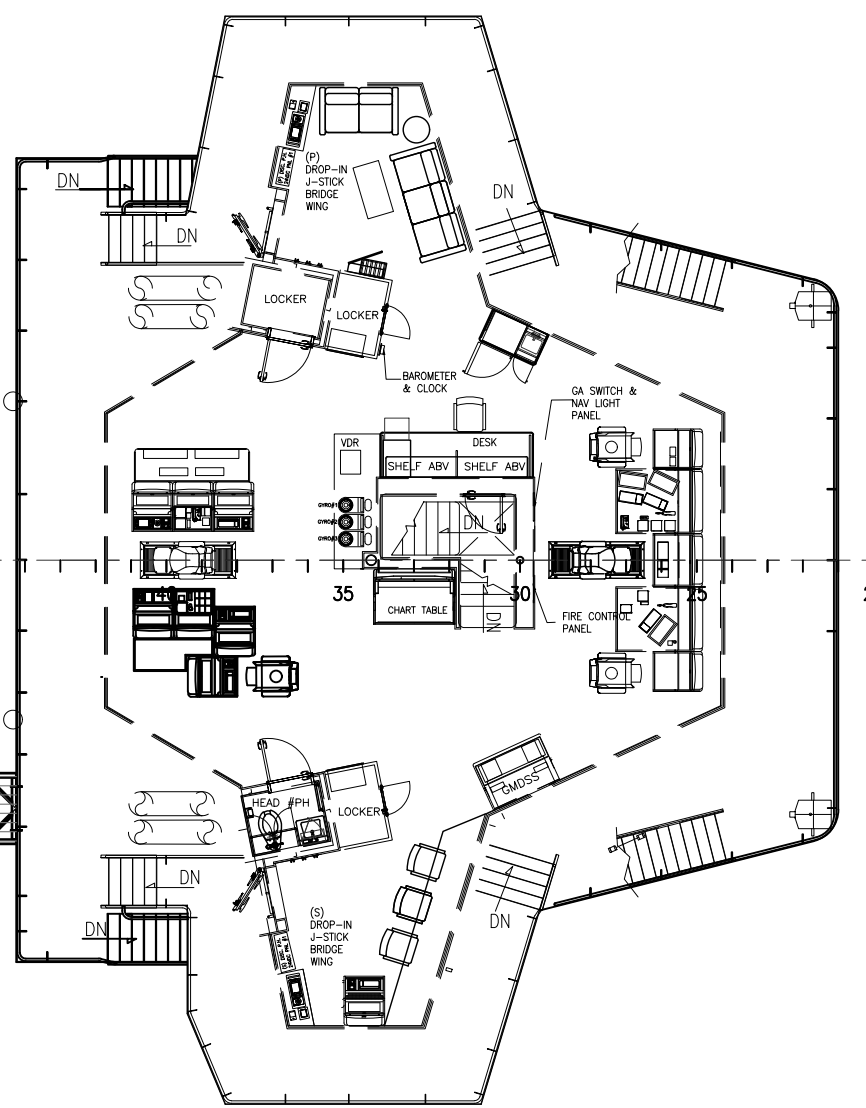
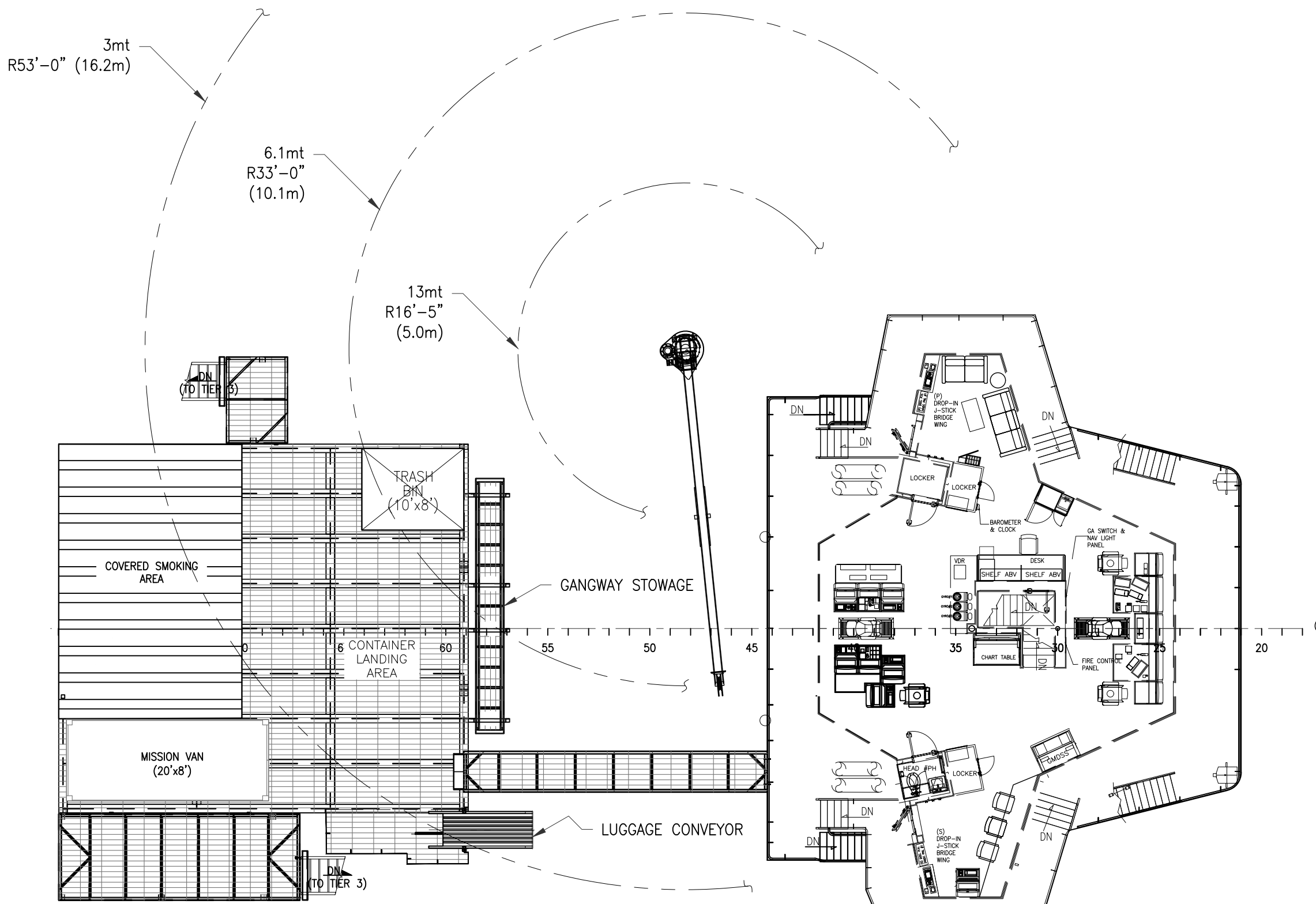
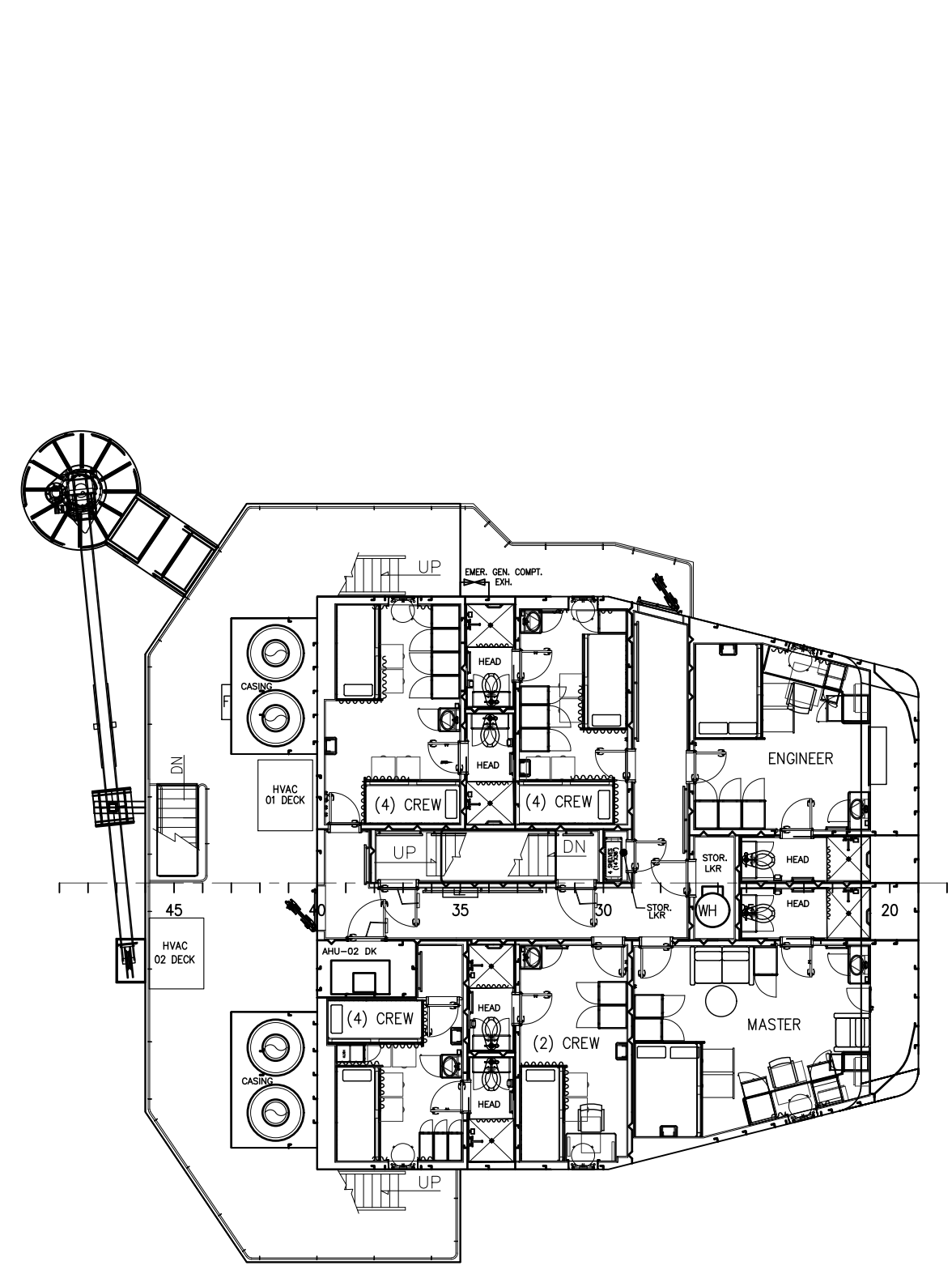
A

D

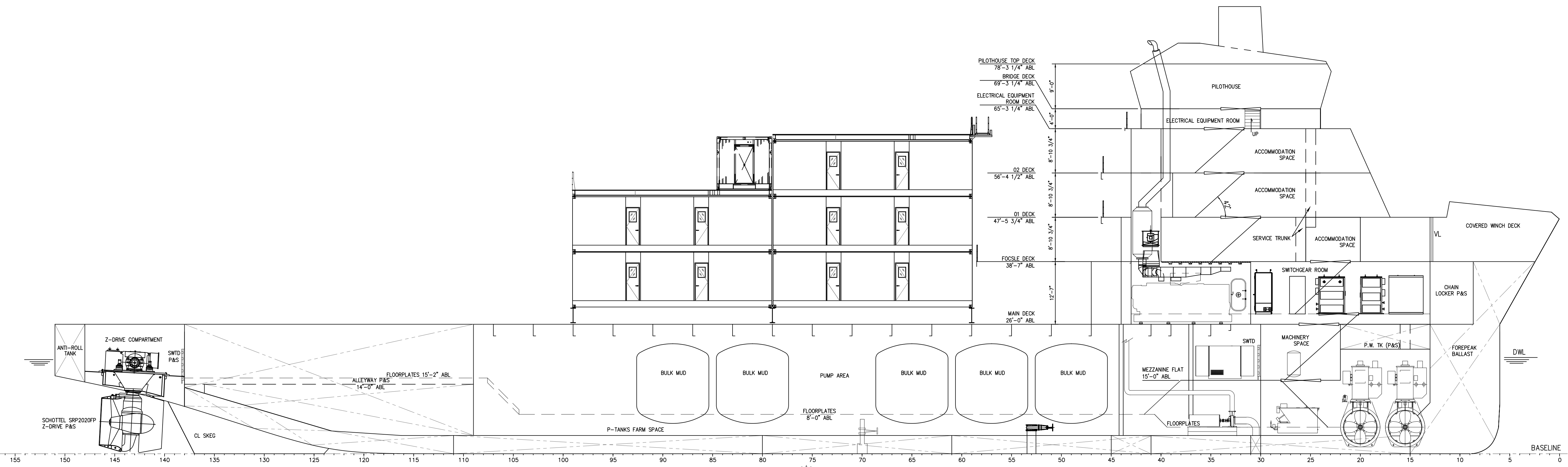
C

B

A



FWD



THIS DRAWING, DESIGN CONCEPT AND SPECIFICATIONS ARE THE PROPERTY OF HORNBECK OFFSHORE SERVICES AND ARE FURNISHED ON A CONFIDENTIAL BASIS WITH AN EXPRESSED UNDERSTANDING THAT THEY WILL NOT BE COPIED IN ANY MANNER USED FOR MANUFACTURING, SALES, TRANSPORTATION, NOR USED TO THE DETRIMENT OF SAID FIRM WITHOUT WRITTEN PERMISSION.

HORNBECK OFFSHORE SERVICES

GENERAL ARRANGEMENT & OUTBOARD PROFILE			SIZE D
TASK No. 7738	DRAWING No. 1.001	SCALE: AS NOTED	REV. 13
HULL No. 210	SY: ESG	DATE: 08/23/19	SHEET 4 OF 4