

PRINCIPAL PARTICULARS

LOA 302'-0"
 LBP - LWL 290'-0"
 BEAM 64'-0"
 DEPTH 26'-0"
 LOADLINE DRAFT 21'-1"
 DEADWEIGHT 5197 LT
 DESIGN DECK LOAD 1024 PSF
 GENERATORS (4) X 1825 KW @ 1800 RPM (WATER COOLED), (2) AUXILIARY X 940 KW @ 1,800 RPM (WATER COOLED)
 TOTAL KILOWATTS 9,180 KW @ 690 VAC
 MAIN PROPULSION (2) X 2,500KW @ 690 VAC @ 1,000 RPM (6,704HP TOTAL) FIXED PITCH VFD Z-DRIVE IN NOZZELS
 BOW THRUSTERS (2) X 1,180KW @ 690 VAC @ 1,200 RPM (3,164HP TOTAL) FIXED PITCH VFD / REVERSING MOTORS
 FIRE MONITORS (2) X 5,284 GPM / (495KW @ 690 VAC) 665HP/394' REACH - REMOTE CONTROLLED FIRE MONITORS
 MAIN CRANE 150mT @ 10m, 25 mT @ 32m
 STORES CRANE 13mT @ 5m
 FRC 1 X 15 PERSON, 6.18m, 250HP
 REGULATORY USGC SUB I & L / SOLAS / ABS ✕ A1, OFFSHORE SERVICE VESSEL, ✕ AMS, DPS-2, ENVIRO, ✕ ACCU, UWILD, Fifi 1, ✕ E, HELIDK, CRC

TANK CAPACITIES

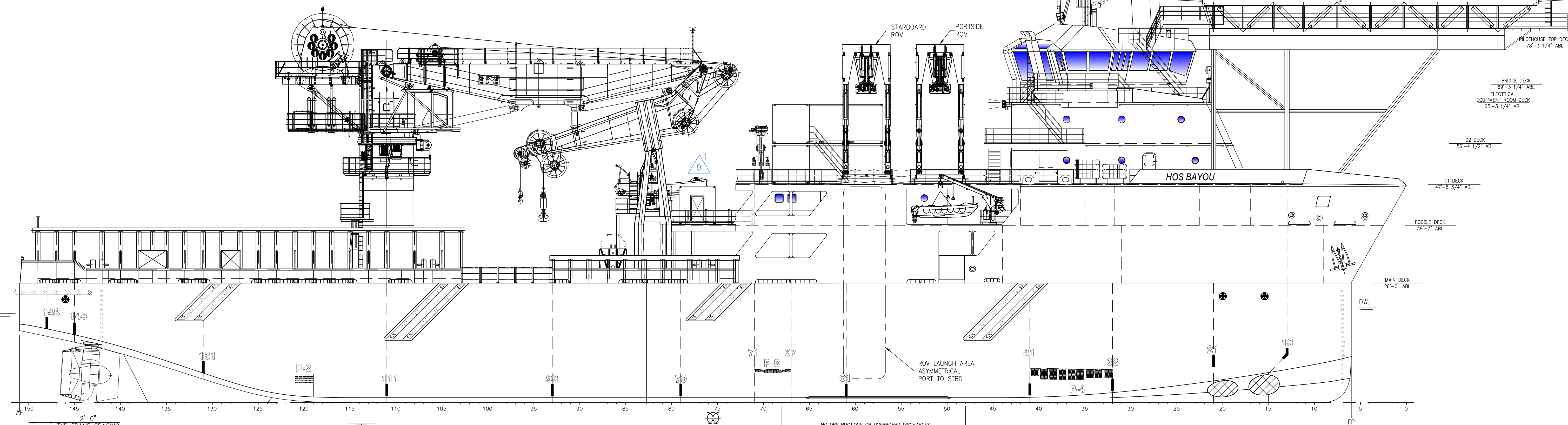
WATER BALLAST 592,554 US GAL (98% FILL)
 TOTAL FUEL OIL (W/SHIPS FO) 279,936 US GAL (98% FILL)
 SHIPS FUEL OIL 23,277 US GAL (98% FILL)
 POTABLE WATER 61,287 US GAL (98% FILL)
 LIQUID MUD 20,652 BARRELS (98% FILL)
 DRY BULK (SG = 2.4) 14,347 CU. FT.
 SEWAGE 24,869 US GAL (98% FILL)
 GREY WATER 24,869 US GAL (98% FILL)

VESSEL ACCOMODATIONS

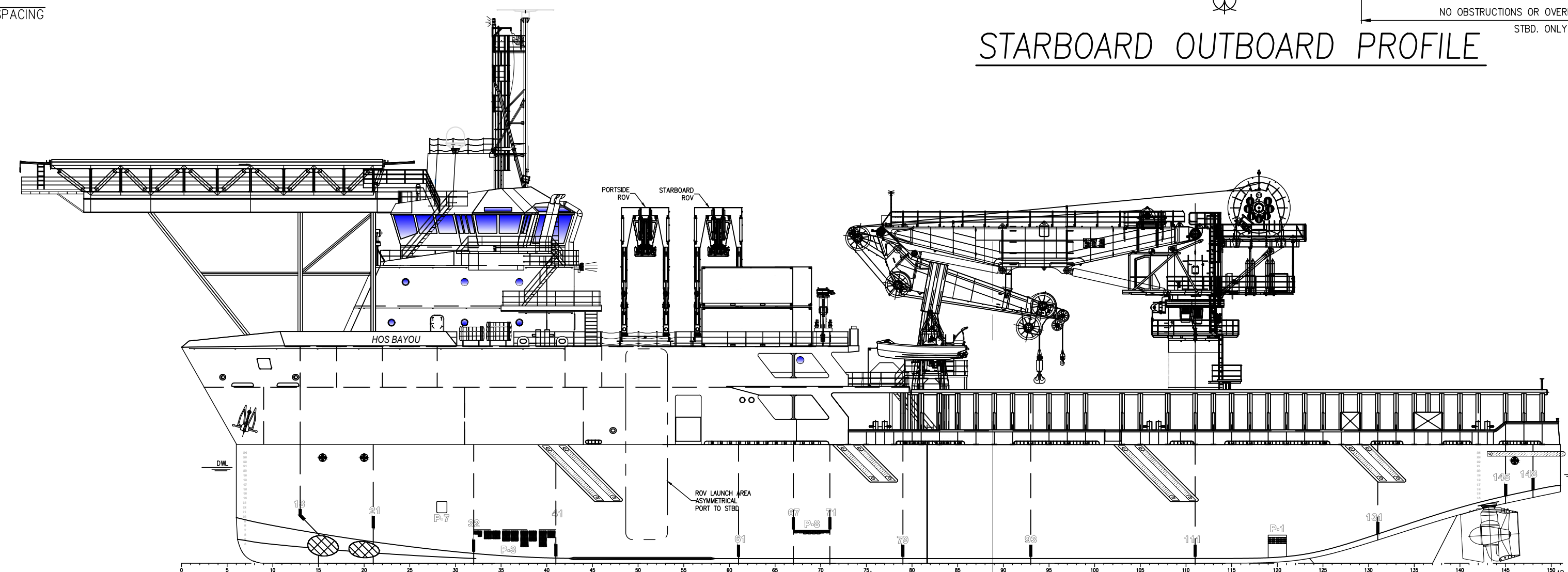
SUMMARY TABLE
 ACCOMODATIONS 73
 STATEROOMS 24
 HEADS 26
 LOUNGE 2
 LAUNDRY AREA 1
 GALLEY 1
 MESS AREA 1
 SICK BAY 1
 CONFERENCE ROOM 1

REVISIONS

REV	ZONE	DESCRIPTION	DATE	BY
1	VAR	REVISION IS A CUMULATIVE REVISION INCORPORATING INTERNAL & EXTERNAL COMMENTS, AS-BUILT REVISIONS & CHANGE ORDERS.	06/13/14	AJR
2	VAR	GENERAL UPDATES INCORPORATING AS-BUILDS	09/03/14	AJR
3	VAR	UPDATED HELIDECK, EXTENDED FOCSLE DECK.	11/17/14	RJW
4	VAR	UPDATED POB WITHOUT 12 MAN CONT.	09/09/15	RJW
5	VAR	TASK 6324: STBD CARGO RAIL MODIFICATIONS.	03/04/16	JWH
6	VAR	TASK 6339: FAST RESCUE BOAT DAVIT INSTALL.	04/01/16	PMD
7	ALL	1. UPDATED TO CURRENT HOS FORMAT 2. REMOVED DELTA ROV SYSTEMS AND INSTALLED ROVOP ROV SYSTEM ON STBD SIDE.	07/29/19	CJT
8	4-28A	1. TASK 6958: RECONFIGURED FOCSLE DK MESS AREA LAYOUT. ADDED STEAM TABLE AND SERVING ISLAND.	01/03/20	SMM
9	1-5A 2-13A 4-30A 4-30	1. TASK 7437: INDICATED FOR LOADING ZONE, REMOVED STAIR, ADDED REMOVABLE GUARDS I.W.O. AFT, STBD FOCSLE DECK. REF. CMR 476. 2. UPDATED FOCSLE DECK AFT DECK ARRANGEMENT PER AS-BUILT.	12/07/21	SMM



STARBOARD OUTBOARD PROFILE



PORT OUTBOARD PROFILE

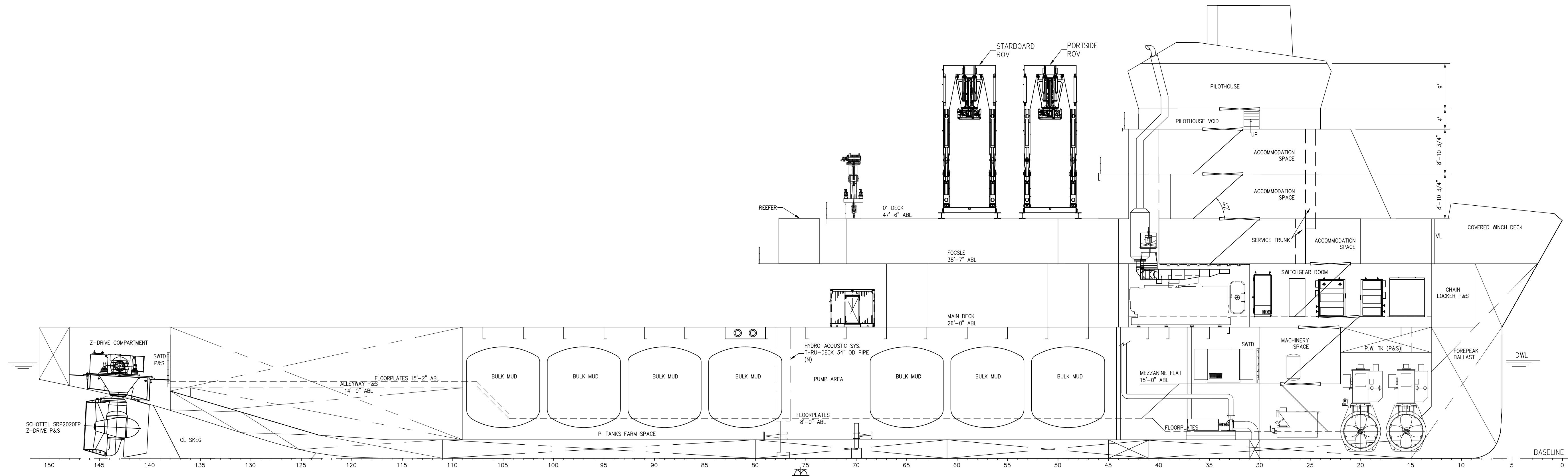
HOSMAX 310 MPSV / HOS BAYOU

THIS DRAWING, DESIGN CONCEPT AND SPECIFICATIONS ARE THE PROPERTY OF HORNBECK OFFSHORE SERVICES AND ARE FURNISHED ON A CONFIDENTIAL BASIS WITH AN EXPRESSED UNDERSTANDING THAT THEY WILL NOT BE COPIED IN ANY MANNER USED FOR MANUFACTURE, SOLD, TRANSFERRED, NOR USED TO THE DETRIMENT OF SAID FIRM WITHOUT WRITTEN PERMISSION. HOS ©
HORNBECK OFFSHORE SERVICES

DRAWN BY: S. MAUL	302'-0" X 64'-0" X 26'-0"		
CHECKED BY: J. GUIDRY	GENERAL ARRANGEMENT & OUTBOARD PROFILE		
APPROVED BY: J. GUIDRY	TASK No. 7437	DRAWING No. 1,001	SCALE: 3/32"=1'-0" DATE: 01/03/20 SY: ESG
	HULL No. 205		REV. SHEET 1 OF 4 9

D

D



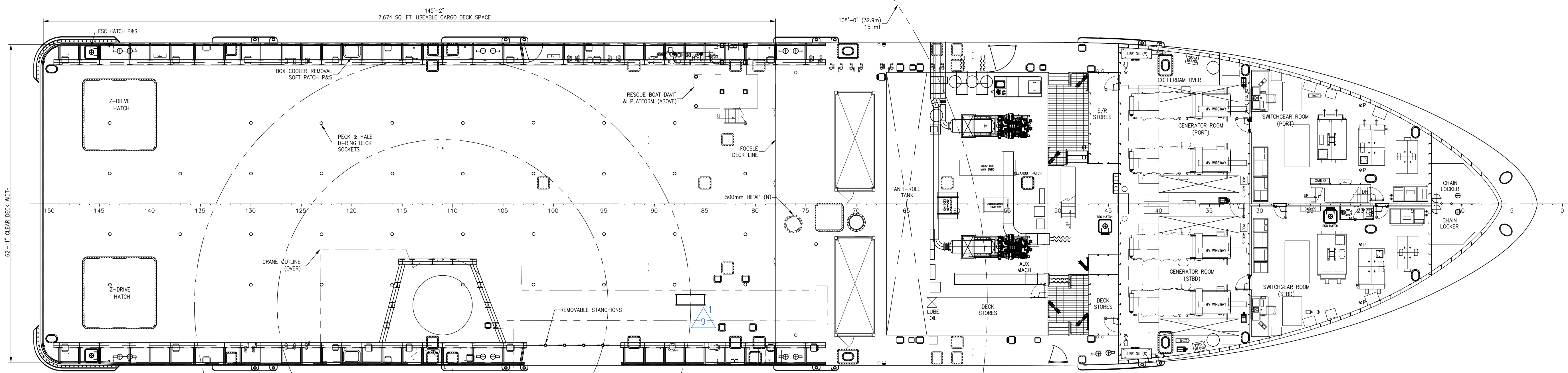
INBOARD PROFILE

C

C

B


B



MAIN DECK

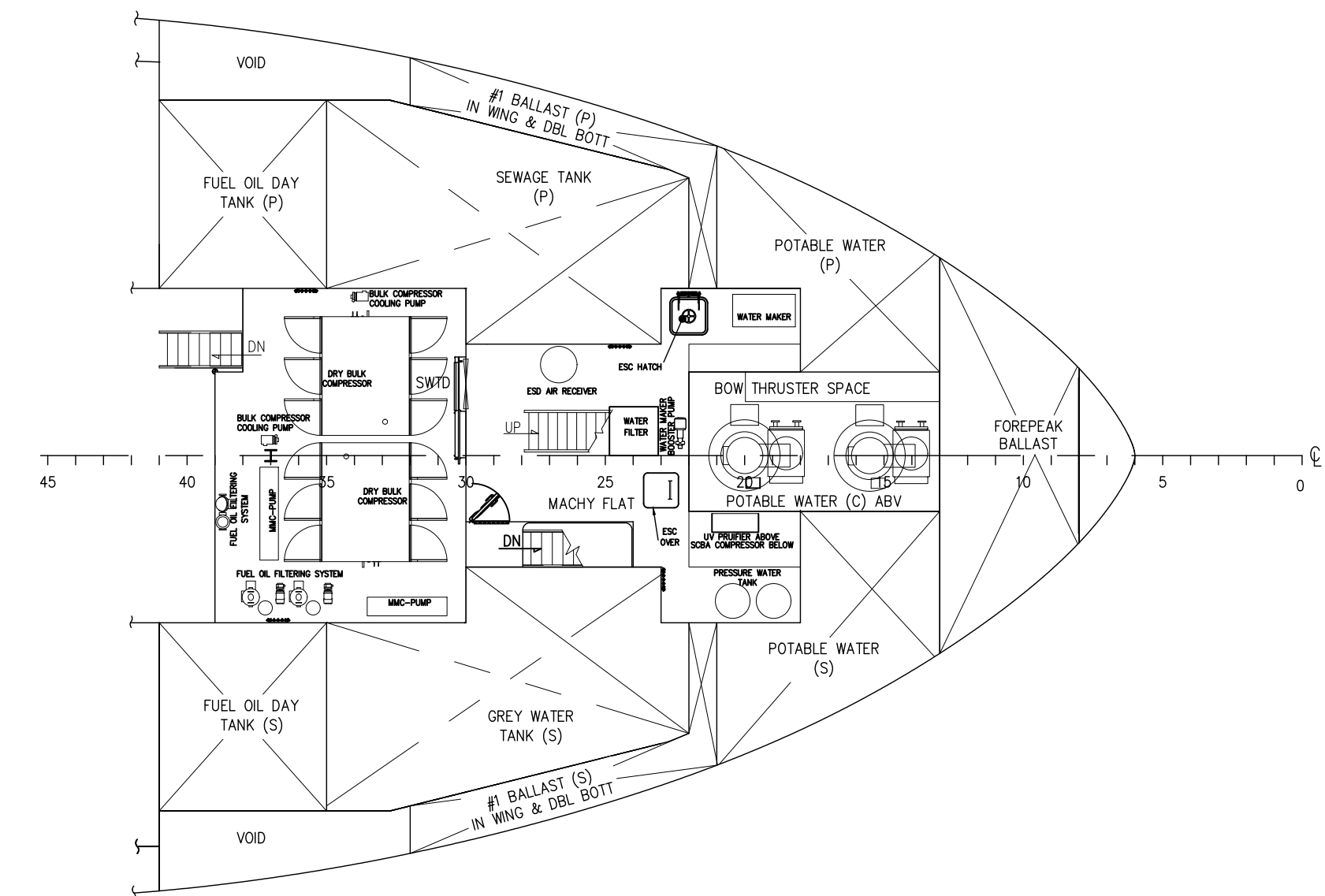
A

A

 <p>THIS DRAWING, DESIGN CONCEPT AND SPECIFICATIONS ARE THE PROPERTY OF HORNBECK OFFSHORE SERVICES AND ARE FURNISHED ON A CONFIDENTIAL BASIS WITH AN EXPRESSED UNDERSTANDING THAT THEY WILL NOT BE COPIED IN ANY MANNER USED FOR MANUFACTURING, SOLD, TRANSFERRED, NOR USED TO THE DETRIMENT OF SAID FIRM WITHOUT WRITTEN PERMISSION.</p> <p>HORNBECK OFFSHORE SERVICES</p>	<p>GENERAL ARRANGEMENT & OUTBOARD PROFILE</p>		<p>SIZE D</p>	
	<p>TASK No. 7437</p>	<p>DRAWING No. 1.001</p>	<p>SCALE: 3/32"=1'-0"</p>	<p>REV. 9</p>
	<p>HULL No. 205</p>	<p>SY: ESG</p>	<p>DATE: 01/03/20 SHEET 2 OF 4</p>	

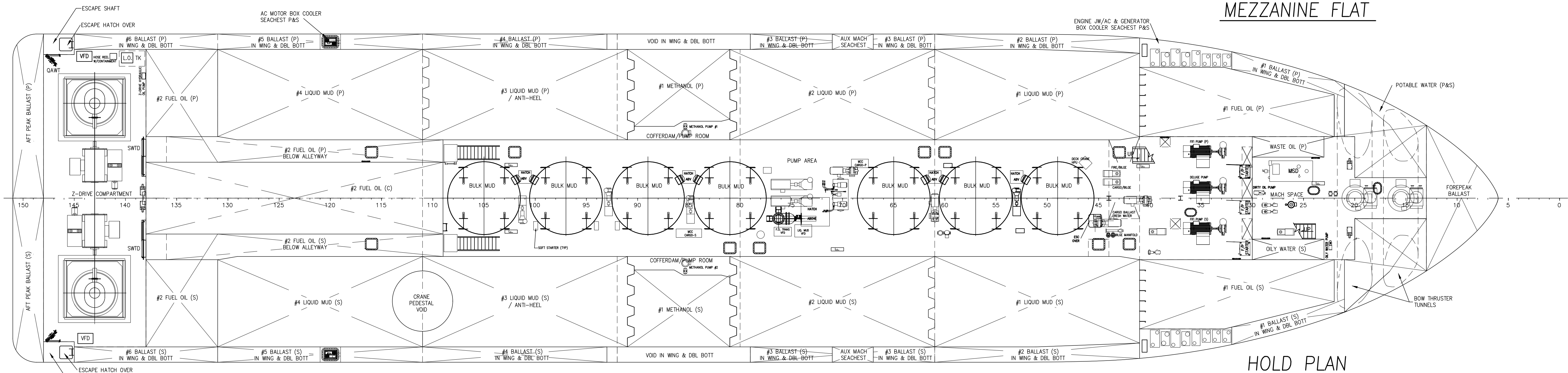
D

D



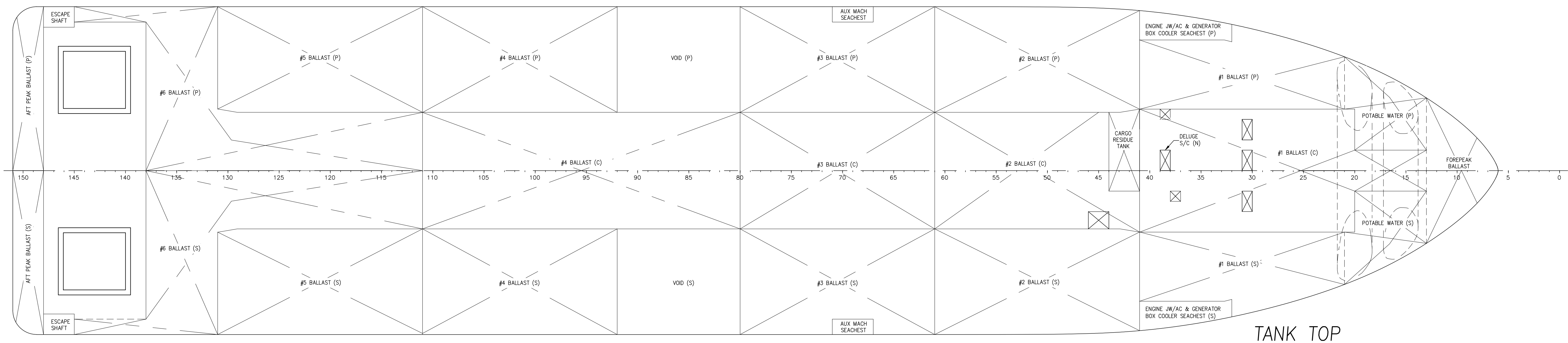
C

C



B

B



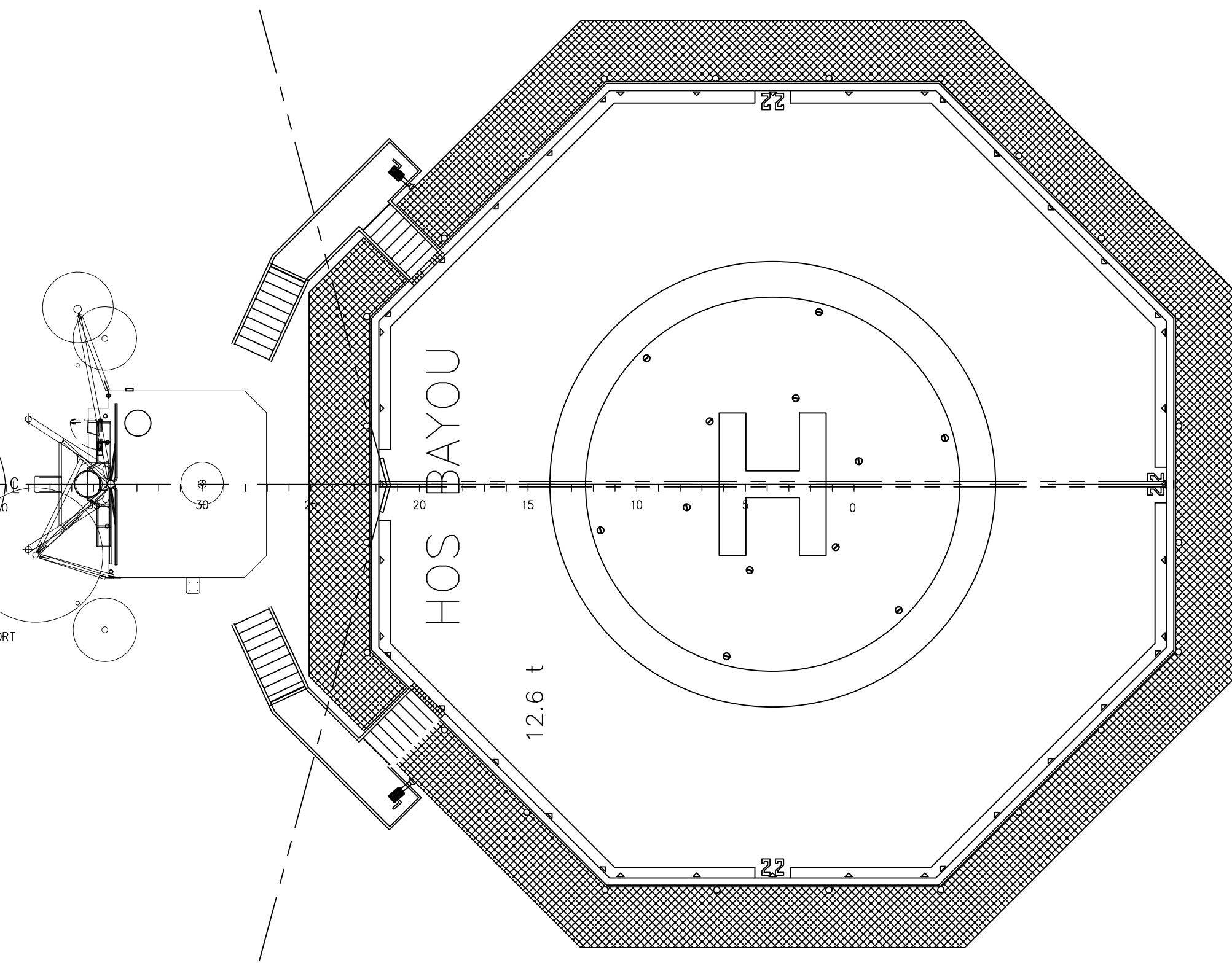
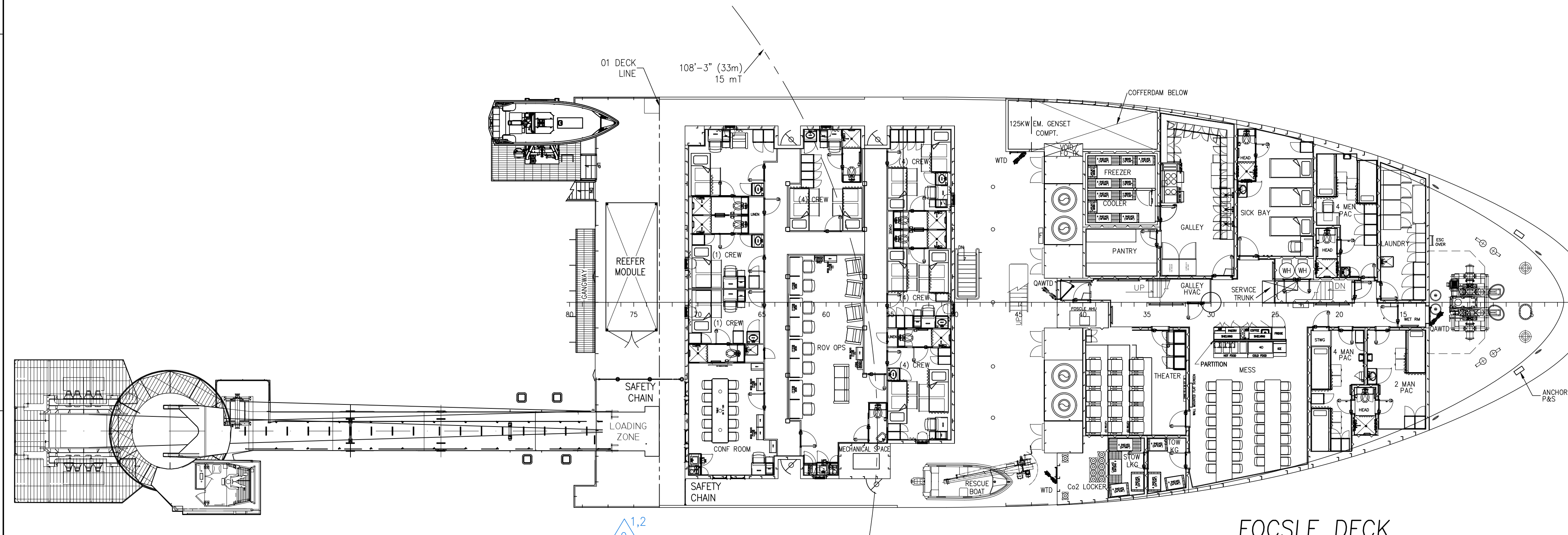
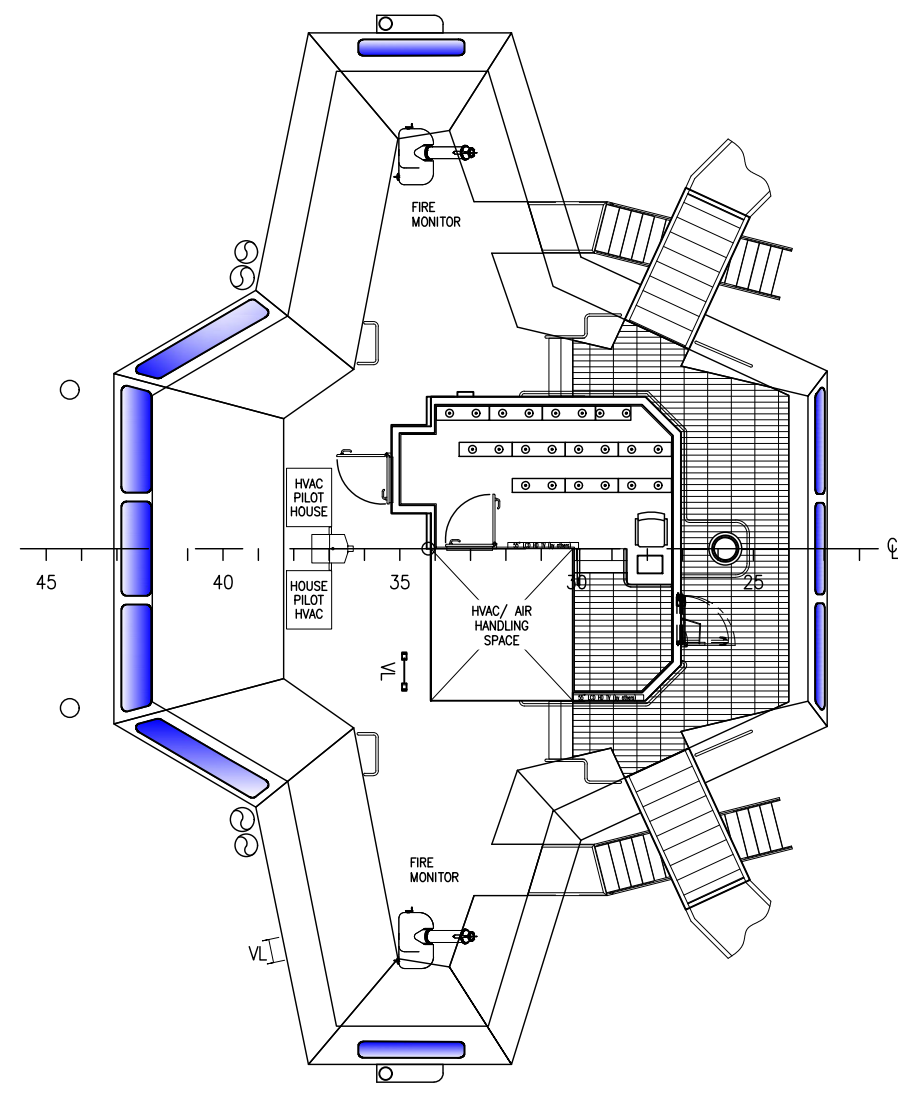
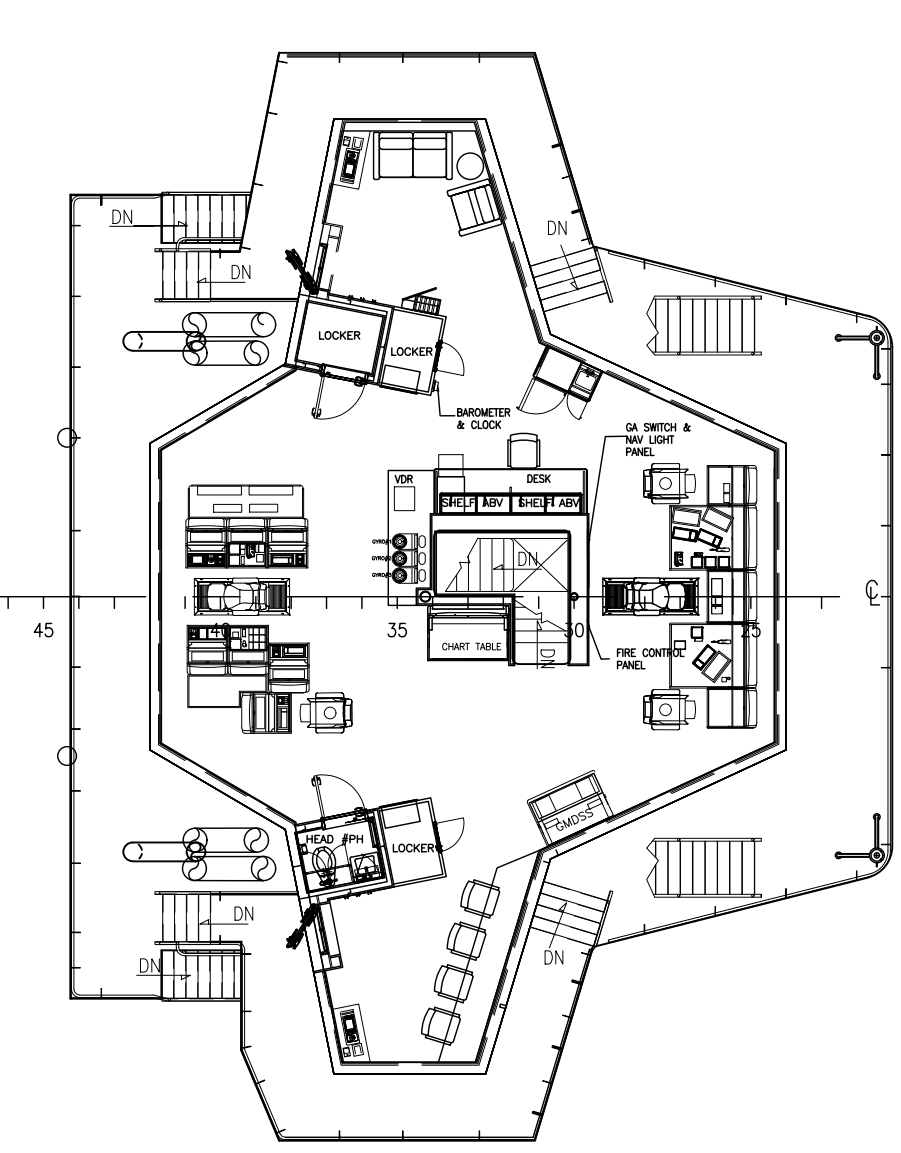
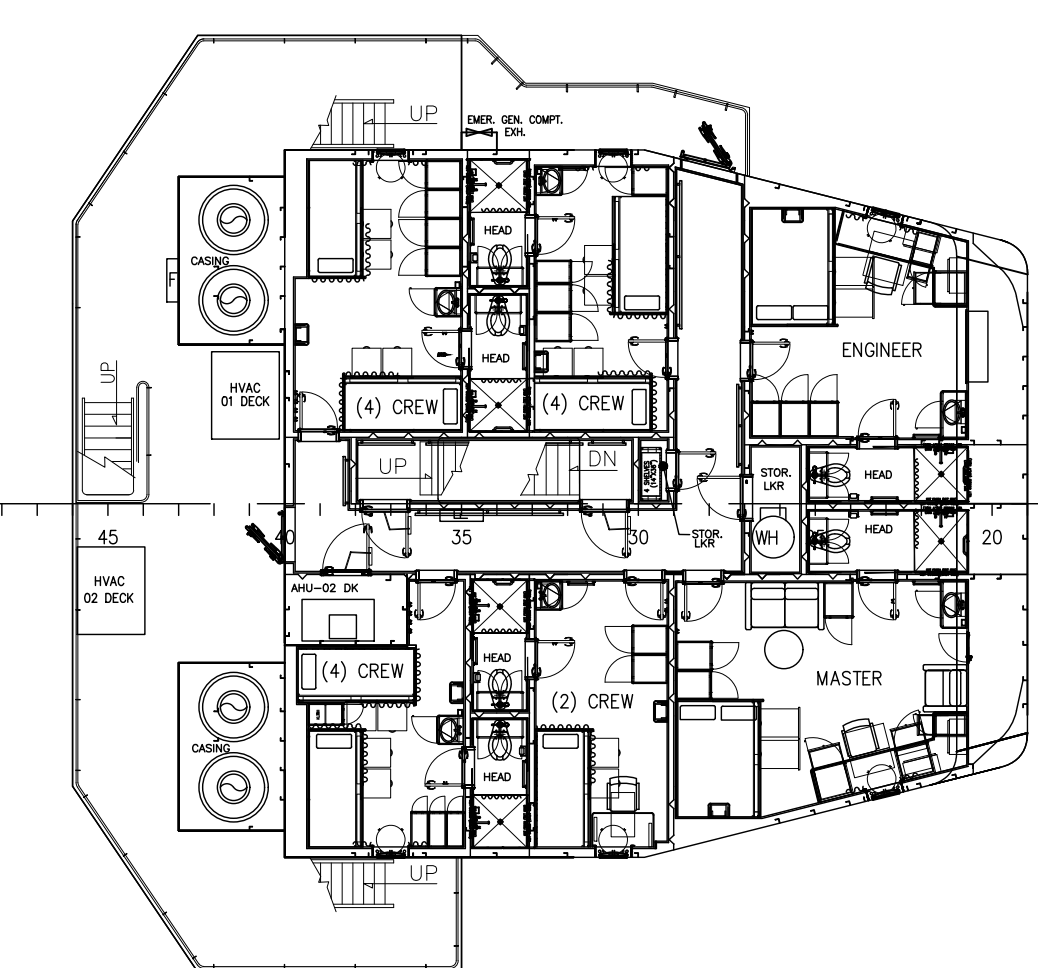
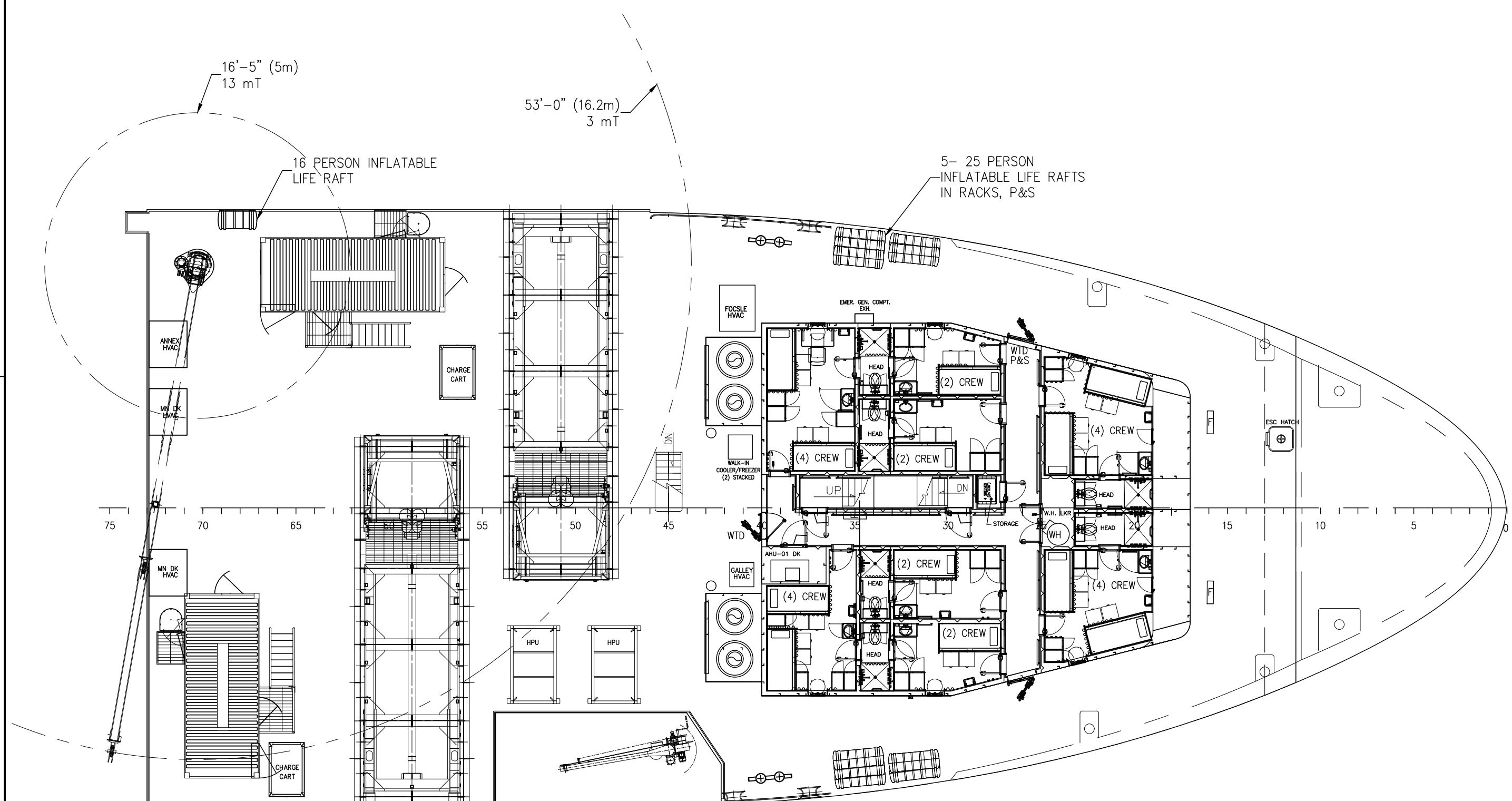
A

A



GENERAL ARRANGEMENT & OUTBOARD PROFILE			SIZE D
TASK No. 7437	DRAWING No. 1.001	SCALE: 3/32"=1'-0"	REV. 9
HULL No. 205	SY: ESG	DATE: 01/03/20	SHEET 3 OF 4

THIS DRAWING, DESIGN CONCEPT AND SPECIFICATIONS ARE THE PROPERTY OF HORNBECK OFFSHORE SERVICES AND ARE FURNISHED ON A CONFIDENTIAL BASIS WITH AN EXPRESSED UNDERSTANDING THAT THEY WILL NOT BE COPIED IN ANY MANNER USED FOR MANUFACTURING, SOLD, TRANSFERRED, NOR USED TO THE DETRIMENT OF SAID FIRM WITHOUT WRITTEN PERMISSION.



	THIS DRAWING, DESIGN CONCEPT AND SPECIFICATIONS ARE THE PROPERTY OF HORNBECK OFFSHORE SERVICES AND ARE FURNISHED ON A CONFIDENTIAL BASIS WITH AN EXPRESSED UNDERSTANDING THAT THEY WILL NOT BE COPIED IN ANY MANNER USED FOR MANUFACTURE, SALE, TRANSFERRED, NOR USED TO THE DETRIMENT OF SAID FIRM WITHOUT WRITTEN PERMISSION.			GENERAL ARRANGEMENT & OUTBOARD PROFILE TASK No. 7437 HULL No. 205	SCALE: 3/32"=1'-0" DATE: 01/03/20 SHEET 4 OF 4	SIZE D REV. 9
	HORNBECK OFFSHORE SERVICES					
	DRAWING No. 1.001 SY: ESG					
	SHEET 4 OF 4					